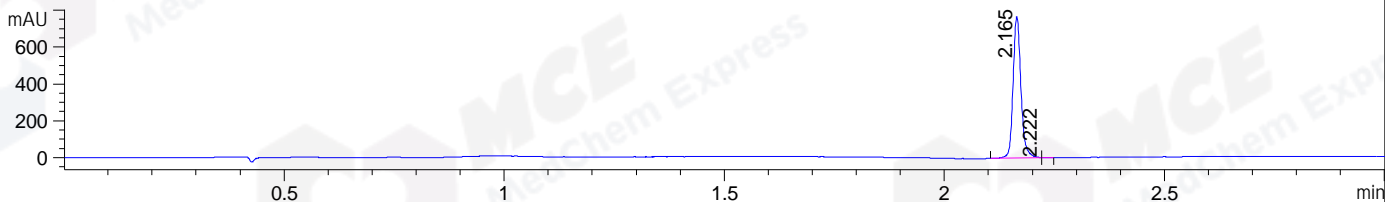
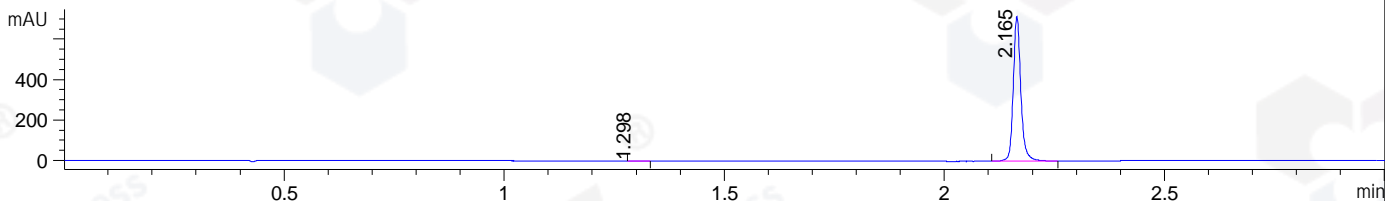


File ..1\DATA\2020\20200303\856\BIZ2020-302-CXL4.D Tgt Mass (CHM):  
 Injection Date : 3 Mar 20 11:52 am +0800 Seq. Line : 37  
 Sample Name : BIZ2020-302-CXL4 Location : P1-A-01  
 Acq. Operator : ZJ\_1432 Inj : 1  
 Spec. Reported : MS Integration Inj Volume : 1 ul  
 Acq. Method : D:\Chem32\1\data\2020\20200303\856\1-POS-3MIN.M  
 Analysis Method : D:\CHEM32\1\DATA\2020\20200303\856\1-POS-3MIN.M  
 Catalog No : HY-135570  
 Method Info : Mobile Phase: A: water(0.01%TFA) B:ACN(0.01%TFA)  
 Gradient: 5% to 95%B within 1.3 min  
 Flow Rate :1.8ml/min  
 Column :SunFire C18, 4.6\*50mm,3.5um A-RP-433  
 Oven Temperature : 45

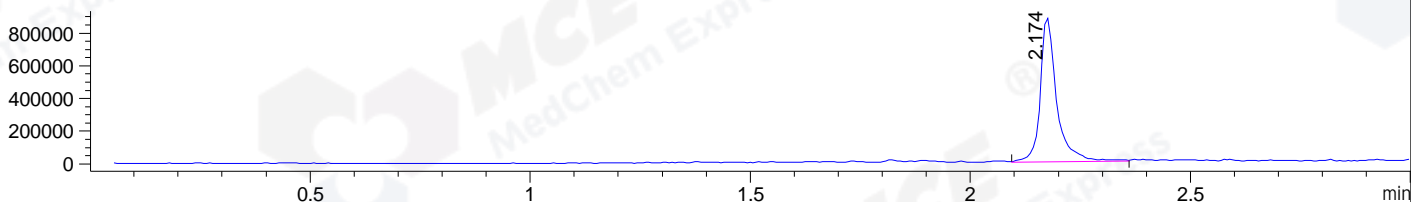
DAD1 B, Sig=214,4 Ref=off



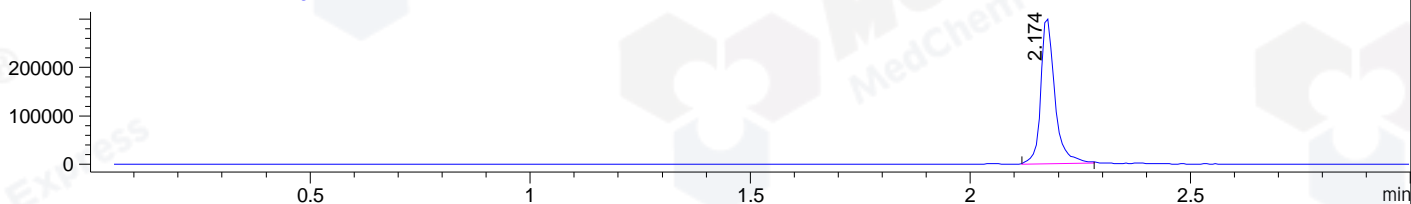
DAD1 C, Sig=254,4 Ref=off



MSD1 TIC, MS File ES-API, Pos, Scan, Frag: 70



Ion 403, MSD1 403, Target Mass 402 +H Positive, EIC=402.7:403.7



## Integration Results for DAD1 B, Sig=214,4 Ref=off

RetTim	Width	Area	Height	Area%	MS (+)
2.16	0.02	956.63	768.47	99.86	405
2.22	0.01	1.30	2.19	0.14	405

## Integration Results for DAD1 C, Sig=254,4 Ref=off

RetTim	Width	Area	Height	Area%	MS (+)
1.30	0.03	1.08	0.66	0.13	ND
2.16	0.02	857.09	716.35	99.87	405

## Integration Results for MSD1 TIC, MS File

RetTim	Width	Area	Height	Area%	MS (+)
2.17	0.04	2287808.75	885234.31	100.00	405

Ret. Time: 2.17

<<<< POSITIVE SPECTRA >>>>

ES-API Positive

