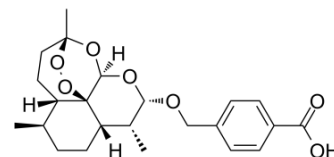


Artelinic acid

Cat. No.:	HY-135578
CAS No.:	120020-26-0
Molecular Formula:	C ₂₃ H ₃₀ O ₇
Molecular Weight:	418.48
Target:	Parasite
Pathway:	Anti-infection
Storage:	Please store the product under the recommended conditions in the COA.



BIOLOGICAL ACTIVITY

Description Artelinic acid, a derivative of Artemisinin, is an antimalarial drug for the treatment of multidrug resistant strains of *Plasmodium falciparum*. Artelinic acid can be administered by various routes of administration, including intravenous, intramuscular and oral routes^{[1][2]}.

In Vivo Artelinic acid (10 mg/kg; i.v.) has an elimination time $t_{1/2}$ of 0.37 hours, a CL of 14.99 mL/min/kg, a V_{ss} of 9.52 L and a AUC_{0-12h} of 11219 ng h/mL for dogs^[1].
 Artelinic acid (10 mg/kg; intramuscular) has an elimination time $t_{1/2}$ of 6.14 hours, a CL of 14.58 mL/min/kg, a V_{ss} of 36.1 L and a AUC_{0-12h} of 96372 ng h/mL for dogs^[1].
 Artelinic acid (10 mg/kg; oral) has an elimination time $t_{1/2}$ of 2.21 hours, a CL of 14.6 mL/min/kg, a V_{ss} of 16.2 L and a AUC_{0-12h} of 8839 ng h/mL for dogs^[1].

Animal Model:	Adult male beagle dogs 3-5 years old ^[1]
Dosage:	10 mg/kg
Administration:	i.v. (Pharmacokinetic Analysis)
Result:	Had an elimination time $t_{1/2}$ of 0.37 hours, a CL of 14.99 mL/min/kg, a V_{ss} of 9.52 L and a AUC_{0-12h} of 11219 ng h/mL for dogs.

REFERENCES

[1]. Li QG, et al. Pharmacology and toxicology of artelinic acid: preclinical investigations on pharmacokinetics, metabolism, protein and red blood cell binding, and acute and anorectic toxicities. *Trans R Soc Trop Med Hyg.* 1998 May-Jun;92(3):332-40.

[2]. Hartell MG, et al. Nuclear magnetic resonance and molecular modeling analysis of the interaction of the antimalarial drugs artelinic acid and artesunic acid with beta-cyclodextrin. *J Pharm Sci.* 2004 Aug;93(8):2076-89.

Caution: Product has not been fully validated for medical applications. For research use only.

Tel: 609-228-6898

Fax: 609-228-5909

E-mail: tech@MedChemExpress.com

Address: 1 Deer Park Dr, Suite Q, Monmouth Junction, NJ 08852, USA