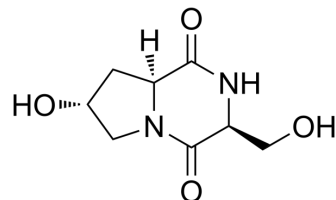


## JBP485

Cat. No.:	HY-135627
CAS No.:	211868-63-2
Molecular Formula:	C <sub>8</sub> H <sub>12</sub> N <sub>2</sub> O <sub>4</sub>
Molecular Weight:	200.19
Target:	Endogenous Metabolite
Pathway:	Metabolic Enzyme/Protease
Storage:	Please store the product under the recommended conditions in the Certificate of Analysis.



### BIOLOGICAL ACTIVITY

<b>Description</b>	JBP485 (cyclo-trans-4-L-hydroxypropyl-L-serine) is a dipeptide with anti-hepatotoxic and wound healing properties. JBP485 can be used for research of various kinds of corneal epithelial diseases <sup>[1]</sup> .
<b>In Vitro</b>	JBP485 (1-100 μM, 24-96 h) accelerates proliferation of cultivated corneal epithelial cells (CECs) dose- and time-dependently <sup>[1]</sup> . JBP485 (1-100 μM, 15 h) accelerates migration of CECs dose-dependently <sup>[1]</sup> . MCE has not independently confirmed the accuracy of these methods. They are for reference only.
<b>In Vivo</b>	JBP485 (100 μM, topical application, 4 times per day) accelerates the corneal epithelial wound healing on rabbits (4 days for healing completely, compared with 5 days for control group) <sup>[1]</sup> . MCE has not independently confirmed the accuracy of these methods. They are for reference only.

### REFERENCES

[1]. Nagata M, et al. JBP485 promotes corneal epithelial wound healing. Sci Rep. 2015 Oct 1;5:14776.

**Caution: Product has not been fully validated for medical applications. For research use only.**

Tel: 609-228-6898

Fax: 609-228-5909

E-mail: tech@MedChemExpress.com

Address: 1 Deer Park Dr, Suite Q, Monmouth Junction, NJ 08852, USA