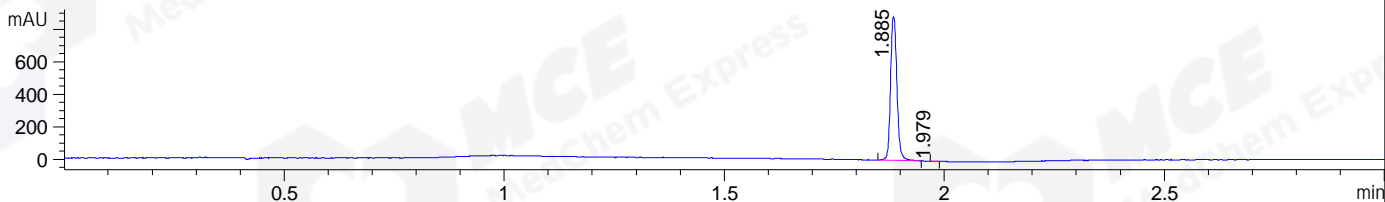
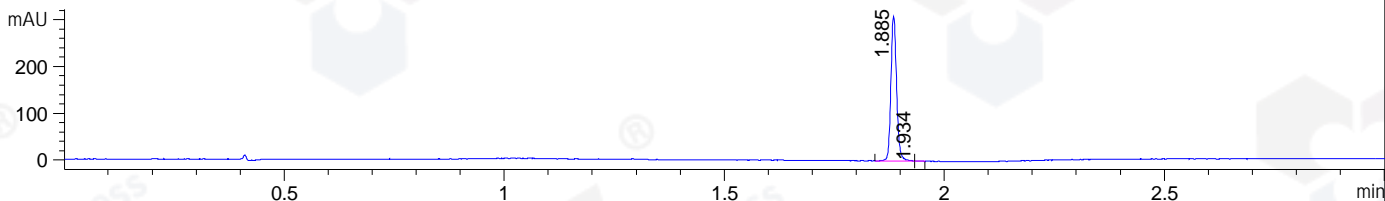


File ..DATA\2020\20200730\1058\BIZ2020-729-SCH15.D Tgt Mass (CHM):
 Injection Date : 30 Jul 20 2:29 pm +0800 Seq. Line : 65
 Sample Name : BIZ2020-729-SCH15 Location : P1-B-04
 Acq. Operator : ZJ_1432 Inj : 1
 Spec. Reported : MS Integration Inj Volume : 1 ul
 Acq. Method : D:\Chem32\1\data\2020\20200730\1058\1-POS-3MIN.M
 Analysis Method : D:\CHEM32\1\DATA\2020\20200730\1058\1-POS-3MIN.M
 Catalog No : HY-13563
 Method Info : Mobile Phase: A: water(0.01%TFA) B:ACN(0.01%TFA)
 Gradient: 5% to 95%B within 1.3 min
 Flow Rate :1.8ml/min
 Column :SunFire C18, 4.6*50mm,3.5um A-RP-314
 Oven Temperature : 45C

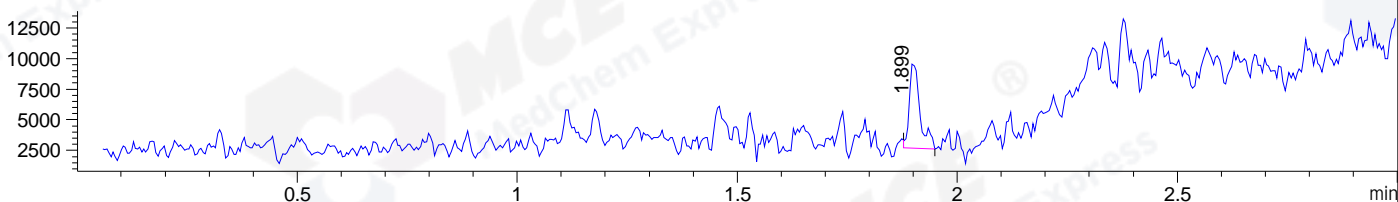
DAD1 B, Sig=214,4 Ref=off



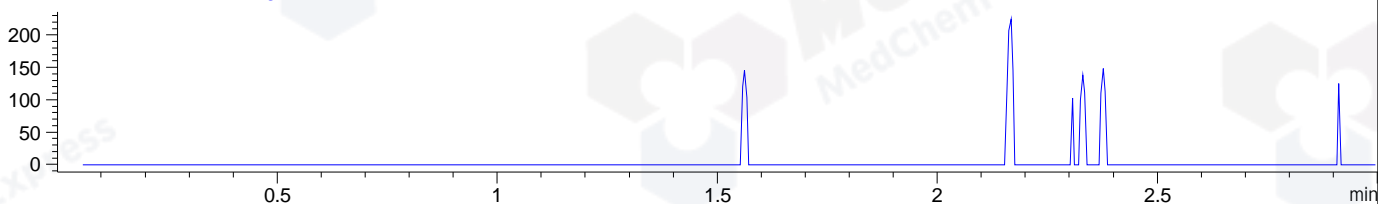
DAD1 C, Sig=254,4 Ref=off



MSD1 TIC, MS File ES-API, Pos, Scan, Frag: 70



Ion 372, MSD1 372, Target Mass 371 +H Positive, EIC=371.7:372.7



Integration Results for DAD1 B, Sig=214,4 Ref=off

RetTim	Width	Area	Height	Area%	MS (+)
1.88	0.02	884.66	886.18	99.91	ND
1.98	0.01	0.78	1.13	0.09	ND

Integration Results for DAD1 C, Sig=254,4 Ref=off

RetTim	Width	Area	Height	Area%	MS (+)
1.88	0.01	277.73	310.17	99.83	ND
1.93	0.01	0.48	0.71	0.17	ND

Integration Results for MSD1 TIC, MS File

RetTim	Width	Area	Height	Area%	MS (+)
1.90	0.03	11773.35	7064.57	100.00	141

Ret. Time: 1.90

<<<< POSITIVE SPECTRA >>>>

ES-API Positive

