

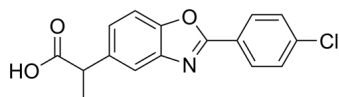
Benoxaprofen

Cat. No.: HY-13568
Batch No.: 275933
CAS No.: 51234-28-7
Molecular Formula: C₁₆H₁₂ClNO₃

ANALYTICAL DATA

Theoretical: C(63.69%), H(4.01%), N(4.64%)
Result: C(63.80%), H(4.01%), N(5.01%)

Chemical Structure:



Caution: Product has not been fully validated for medical applications. For research use only.

Tel: 609-228-6898

Fax: 609-228-5909

E-mail: tech@MedChemExpress.com

Address: 1 Deer Park Dr, Suite Q, Monmouth Junction, NJ 08852, USA