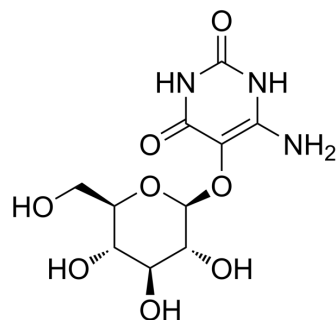


Convicine

Cat. No.:	HY-135738
CAS No.:	19286-37-4
Molecular Formula:	C ₁₀ H ₁₅ N ₃ O ₈
Molecular Weight:	305.24
Target:	Others
Pathway:	Others
Storage:	Please store the product under the recommended conditions in the Certificate of Analysis.



BIOLOGICAL ACTIVITY

Description

Convicine is a pyrimidine glycoside. Convicine, as well as Vicine, is the precursor of the aglycones Divicine and Isouramil. Convicine is the main factors of favism, which is a genetic condition leading to severe hemolysis after faba bean ingestion. Convicine can be isolated from the faba bean^{[1][2]}.

REFERENCES

- [1]. Elkins AC, et al. A Simple High-Throughput Method for the Analysis of Vicine and Convicine in Faba Bean. *Molecules*. 2022 Sep 23;27(19):6288.
- [2]. Rizzello CG, et al. Degradation of vicine, convicine and their aglycones during fermentation of faba bean flour. *Sci Rep*. 2016 Aug 31;6:32452.

Caution: Product has not been fully validated for medical applications. For research use only.

Tel: 609-228-6898

Fax: 609-228-5909

E-mail: tech@MedChemExpress.com

Address: 1 Deer Park Dr, Suite Q, Monmouth Junction, NJ 08852, USA