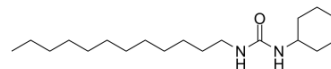


1-Cyclohexyl-3-dodecyl urea

Cat. No.:	HY-135795		
CAS No.:	402939-18-8		
Molecular Formula:	C ₁₉ H ₃₈ N ₂ O		
Molecular Weight:	310.52		
Target:	Epoxide Hydrolase		
Pathway:	Metabolic Enzyme/Protease		
Storage:	Powder	-20°C	3 years
		4°C	2 years
	In solvent	-80°C	6 months
		-20°C	1 month



SOLVENT & SOLUBILITY

In Vitro	Ethanol : 16.67 mg/mL (53.68 mM; Need ultrasonic)				
		Solvent Concentration	Mass 1 mg	5 mg	10 mg
	Preparing Stock Solutions	1 mM	3.2204 mL	16.1020 mL	32.2040 mL
		5 mM	0.6441 mL	3.2204 mL	6.4408 mL
10 mM		0.3220 mL	1.6102 mL	3.2204 mL	
Please refer to the solubility information to select the appropriate solvent.					
In Vivo	1. Add each solvent one by one: 10% EtOH >> 90% corn oil Solubility: ≥ 1.67 mg/mL (5.38 mM); Clear solution				

BIOLOGICAL ACTIVITY

Description	1-Cyclohexyl-3-dodecyl urea (CDU; N-Cyclohexyl-N-dodecyl urea; NCND) is a highly selective soluble epoxide hydrolase (sEH) inhibitor. 1-Cyclohexyl-3-dodecyl urea (CDU; N-Cyclohexyl-N-dodecyl urea; NCND) increases epoxyeicosatrienoic acids (EETs) levels and lowers blood pressure in angiotensin II (Ang II) hypertension ^[1] .
IC ₅₀ & Target	IC50: soluble epoxide hydrolase (sEH) ^[1]
In Vivo	1-Cyclohexyl-3-dodecyl urea (CDU; N-Cyclohexyl-N-dodecyl urea; NCND) (intraperitoneal injection; 3mg/day; 4 days) lowers systolic blood pressure by 30 mm Hg in Ang II hypertensive animals, whereas the corn oil vehicle has no effect on blood pressure in normotensive or Ang II hypertensive animals ^[1] . MCE has not independently confirmed the accuracy of these methods. They are for reference only.

Animal Model:	Male Sprague-Dawley rats ^[1]
Dosage:	3mg/day
Administration:	Intraperitoneal injection; 4 days
Result:	Had antihypertensive properties.

REFERENCES

[1]. Imig JD, et al. Soluble epoxide hydrolase inhibition lowers arterial blood pressure in angiotensin II hypertension. *Hypertension*. 2002 Feb;39(2 Pt 2):690-4.

Caution: Product has not been fully validated for medical applications. For research use only.

Tel: 609-228-6898

Fax: 609-228-5909

E-mail: tech@MedChemExpress.com

Address: 1 Deer Park Dr, Suite Q, Monmouth Junction, NJ 08852, USA