

TH1217

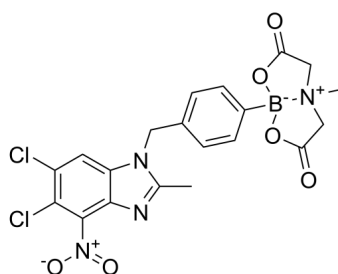
Cat. No.: HY-135909
Batch No.: 213529
CAS No.: 1862212-48-3
Molecular Formula: C₂₀H₁₇BCl₂N₄O₆

ANALYTICAL DATA

Theoretical: C(48.91%), H(3.49%), N(11.41%)

Result: C(49.01%), H(3.51%), N(11.26%)

Chemical Structure:



Caution: Product has not been fully validated for medical applications. For research use only.

Tel: 609-228-6898

Fax: 609-228-5909

E-mail: tech@MedChemExpress.com

Address: 1 Deer Park Dr, Suite Q, Monmouth Junction, NJ 08852, USA