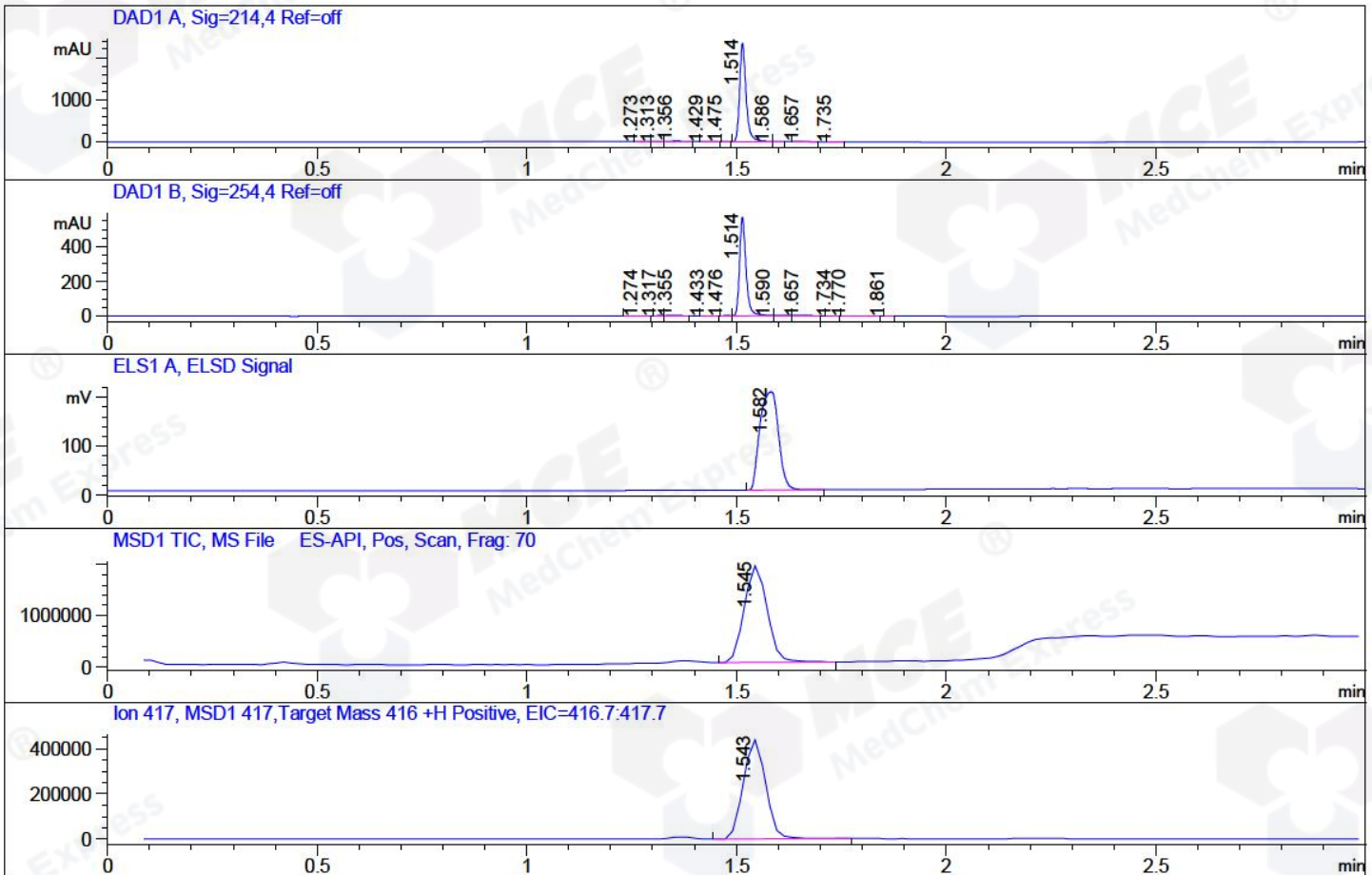


File ..3\Data\20171219\20171219\BIZ2017-D19-WYQ3.D Tgt Mass (CHM):
Injection Date : 19 Dec 17 2:55 pm +0800 Seq. Line : 72
Sample Name : BIZ2017-D19-WYQ3 Location : P2-A-02
Acq. Operator : ZLJ_587 Inj : 1
Spec. Reported : MS Integration Inj Volume : 1 ul
Acq. Method : D:\LCMS03\Data\20171219\20171219\1-POS-3MIN.M
Analysis Method : D:\LCMS03\Data\20171219\20171219\1-POS-3MIN.M
Catalog No : HY-13603 Batch#27851
Method Info : Mobile Phase: A: water(0.01%TFA) B:ACN(0.01%TFA)
Gradient: 5% to 95%B within 1.3 min
Flow Rate :1.8ml/min
Column :SunFire C18, 4.6*50mm,3.5um A-RP-186
Oven Temperature : 45C



Integration Results for DAD1 A, Sig=214,4 Ref=off

RetTim	Width	Area	Height	Area%	MS (+)
1.27	0.02	2.45	2.17	0.10	102
1.31	0.01	3.33	3.80	0.13	102
1.36	0.02	18.69	14.97	0.74	102
1.43	0.02	2.42	1.83	0.10	233
1.47	0.01	0.68	0.89	0.03	417
1.51	0.02	2474.79	2334.21	98.04	417
1.59	0.01	4.10	4.94	0.16	419
1.66	0.02	15.36	11.98	0.61	233
1.74	0.03	2.48	1.60	0.10	233

Integration Results for DAD1 B, Sig=254,4 Ref=off

RetTim	Width	Area	Height	Area%	MS (+)
1.27	0.02	0.53	0.36	0.09	102
1.32	0.02	0.64	0.70	0.10	102
1.35	0.02	3.48	2.54	0.57	102
1.43	0.02	0.51	0.39	0.08	233
1.48	0.01	0.73	0.87	0.12	417

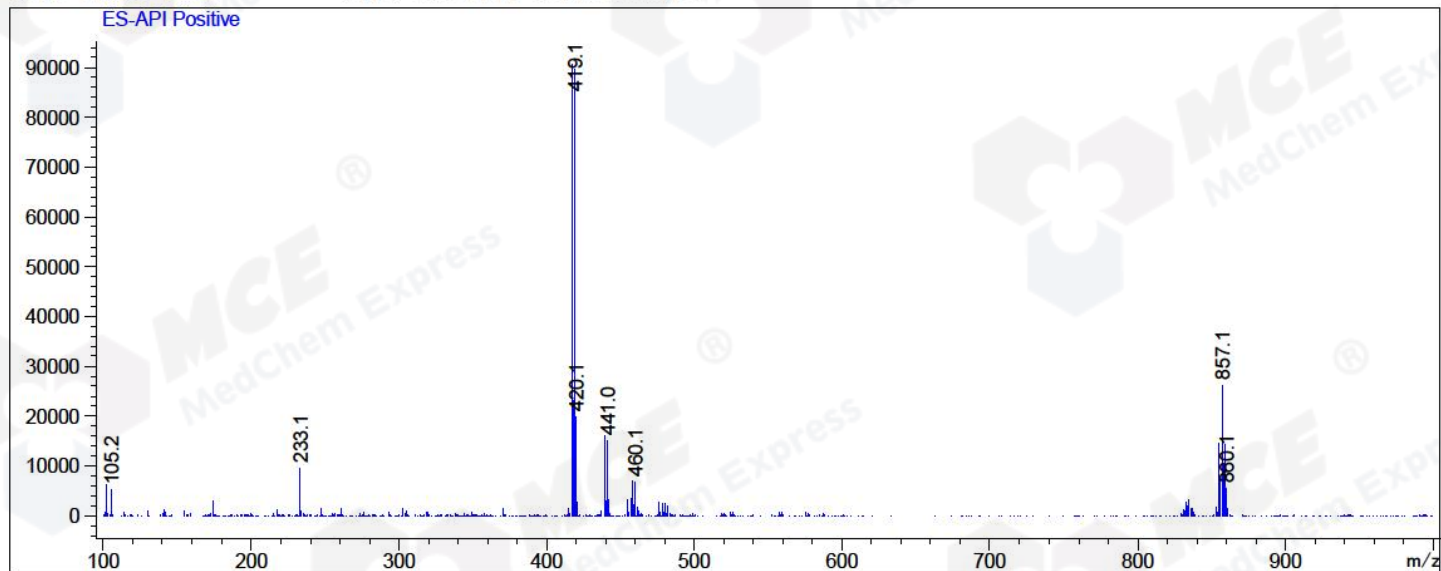
1.51	0.02	602.02	565.13	98.17	417
1.59	0.02	1.37	1.18	0.22	419
1.66	0.02	2.55	1.97	0.42	233
1.73	0.02	0.20	0.19	0.03	233
1.77	0.03	1.03	0.53	0.17	233
1.86	0.02	0.17	0.16	0.03	233

Integration Results for MSD1 TIC, MS File

RetTim	Width	Area	Height	Area%	MS(+)
1.54	0.06	7123300.50	1887917.25	100.00	417

Ret. Time: 1.54

<<<< POSITIVE SPECTRA >>>>



*** End of Report ***