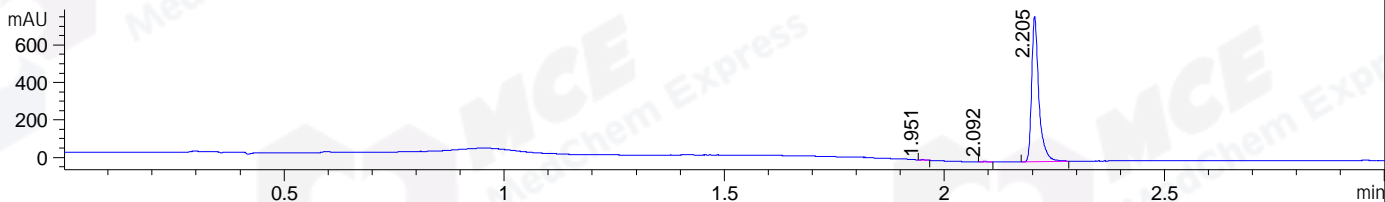
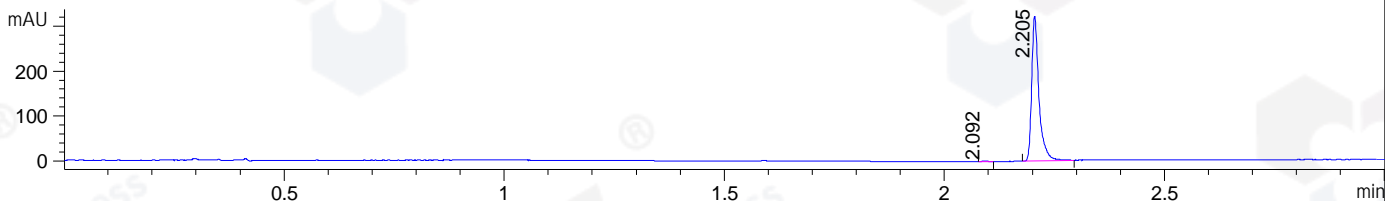


File ..DATA\2020\20200604\985\BIZ2020-602-WMX13-.D Tgt Mass (CHM):
 Injection Date : 4 Jun 20 4:48 pm +0800 Seq. Line : 90
 Sample Name : BIZ2020-602-WMX13 Location : P1-A-07
 Acq. Operator : ZJ_1432 Inj : 1
 Spec. Reported : MS Integration Inj Volume : 1 ul
 Acq. Method : D:\Chem32\1\data\2020\20200604\985\1-POS-3MIN.M
 Analysis Method : D:\CHEM32\1\DATA\2020\20200604\985\1-POS-3MIN.M
 Catalog No : HY-136121
 Method Info : Mobile Phase: A: water(0.01%TFA) B:ACN(0.01%TFA)
 Gradient: 5% to 95%B within 1.3 min
 Flow Rate :1.8ml/min
 Column :SunFire C18, 4.6*50mm,3.5um A-RP-607
 Oven Temperature : 45

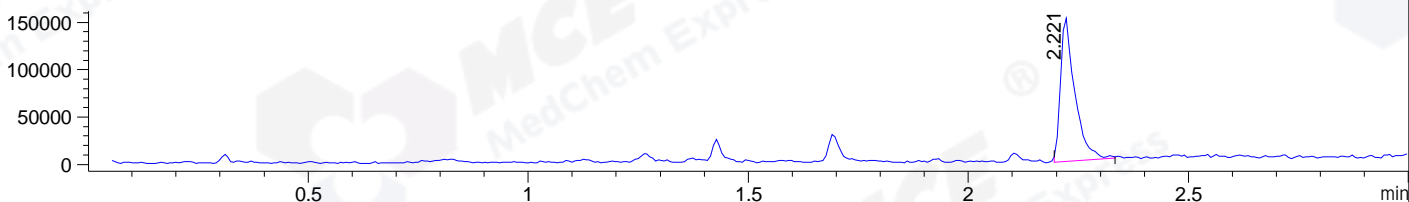
DAD1 B, Sig=214,4 Ref=off



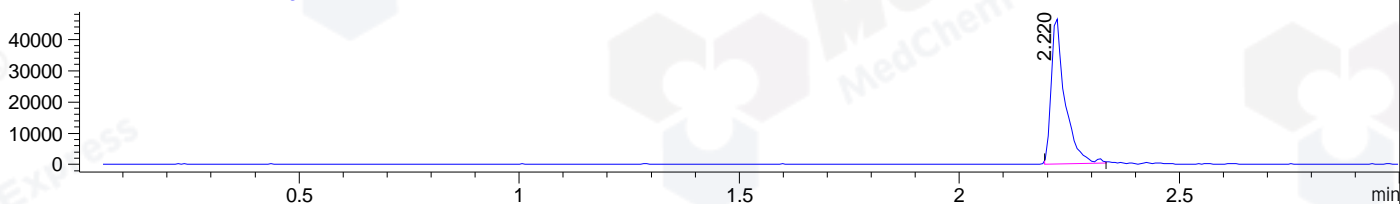
DAD1 C, Sig=254,4 Ref=off



MSD1 TIC, MS File ES-API, Pos, Scan, Frag: 70



Ion 368, MSD1 368, Target Mass 367 +H Positive, EIC=367.7:368.7



Integration Results for DAD1 B, Sig=214,4 Ref=off

RetTim	Width	Area	Height	Area%	MS (+)
1.95	0.01	1.39	1.70	0.16	ND
2.09	0.02	2.94	3.12	0.33	334
2.21	0.02	884.93	777.18	99.51	368

Integration Results for DAD1 C, Sig=254,4 Ref=off

RetTim	Width	Area	Height	Area%	MS (+)
2.09	0.02	1.53	1.69	0.41	334
2.21	0.02	370.68	323.34	99.59	368

Integration Results for MSD1 TIC, MS File

RetTim	Width	Area	Height	Area%	MS (+)
2.22	0.03	345084.19	151696.22	100.00	368

Ret. Time: 2.22

<<<< POSITIVE SPECTRA >>>>

ES-API Positive

