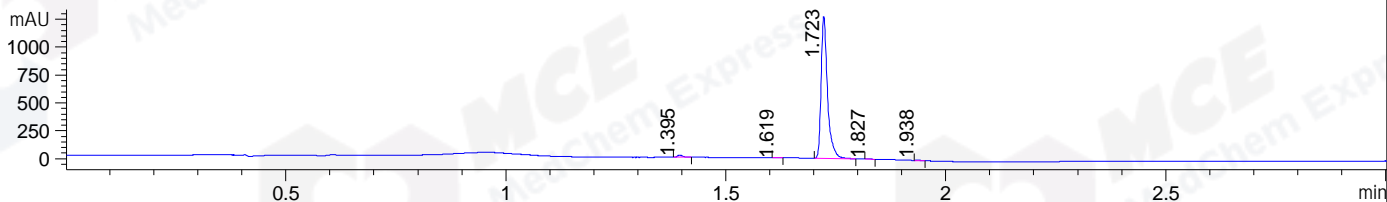
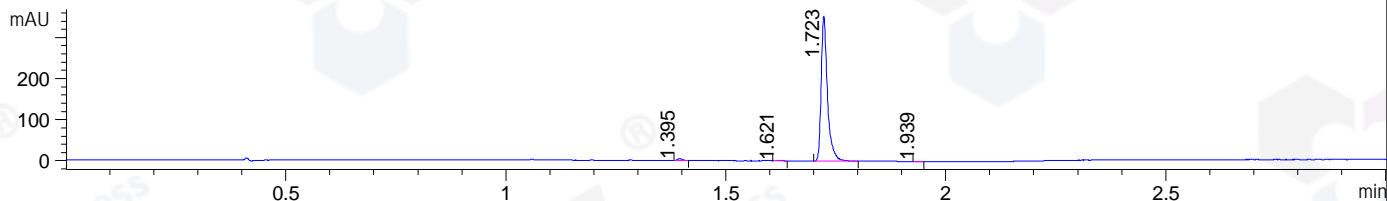


File ..1\DATA\2020\20200612\991\BIZ2020-612-WMX2.D Tgt Mass (CHM):
 Injection Date : 12 Jun 20 4:37 pm +0800 Seq. Line : 77
 Sample Name : BIZ2020-612-WMX2 Location : P1-D-03
 Acq. Operator : ZJ_1432 Inj : 1
 Spec. Reported : MS Integration Inj Volume : 1 ul
 Acq. Method : D:\Chem32\1\data\2020\20200612\991\1-POS-3MIN.M
 Analysis Method : D:\CHEM32\1\DATA\2020\20200612\991\1-POS-3MIN.M
 Catalog No : HY-136128
 Method Info : Mobile Phase: A: water(0.01%TFA) B:ACN(0.01%TFA)
 Gradient: 5% to 95%B within 1.3 min
 Flow Rate :1.8ml/min
 Column :SunFire C18, 4.6*50mm,3.5um A-RP-607
 Oven Temperature : 45□

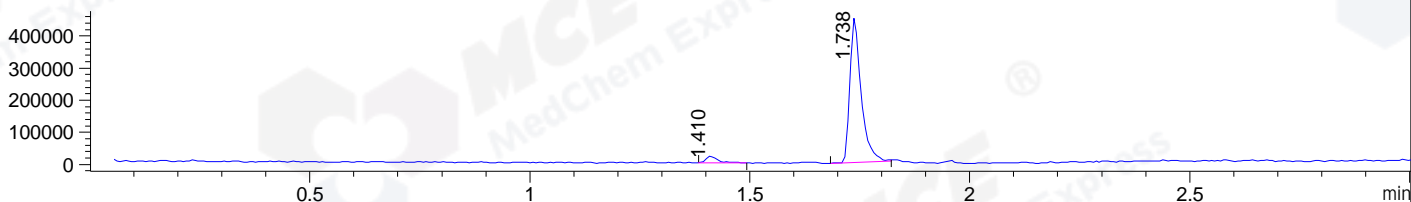
DAD1 B, Sig=214,4 Ref=off



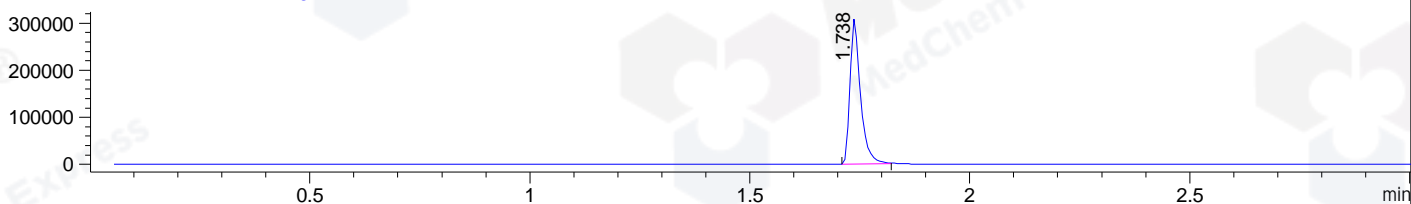
DAD1 C, Sig=254,4 Ref=off



MSD1 TIC, MS File ES-API, Pos, Scan, Frag: 70



Ion 373, MSD1 373, Target Mass 372 +H Positive, EIC=372.7:373.7



Integration Results for DAD1 B, Sig=214,4 Ref=off

RetTim	Width	Area	Height	Area%	MS (+)
1.40	0.01	15.87	20.02	1.22	476
1.62	0.01	1.26	1.59	0.10	157
1.72	0.02	1286.35	1273.49	98.45	373
1.83	0.01	1.36	2.08	0.10	373
1.94	0.01	1.74	2.23	0.13	ND

Integration Results for DAD1 C, Sig=254,4 Ref=off

RetTim	Width	Area	Height	Area%	MS (+)
1.40	0.01	3.70	4.49	1.04	476
1.62	0.02	0.53	0.55	0.15	157
1.72	0.02	349.65	353.01	98.67	373
1.94	0.01	0.48	0.58	0.13	ND

Integration Results for MSD1 TIC, MS File

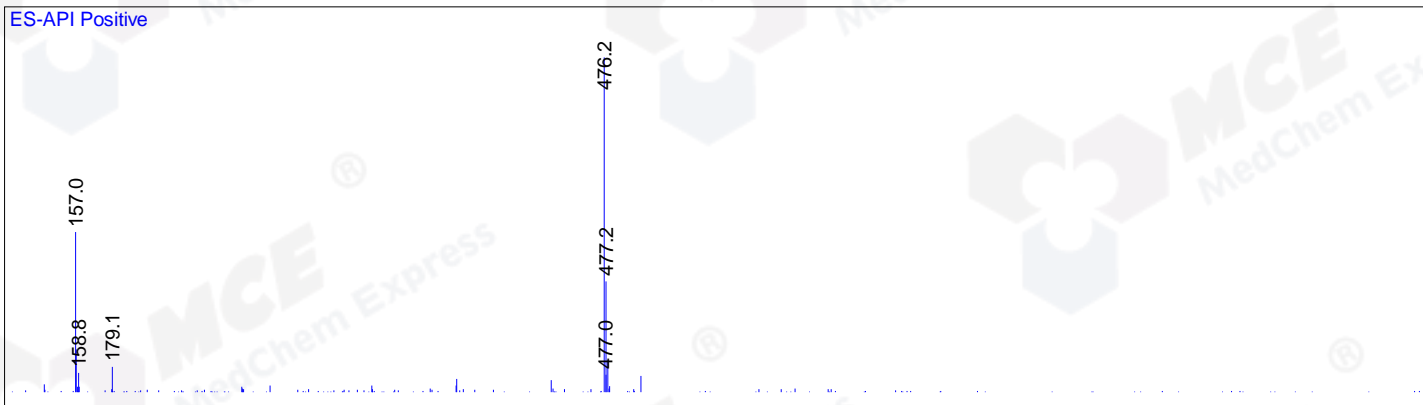
RetTim	Width	Area	Height	Area%	MS (+)
--------	-------	------	--------	-------	--------

1.41	0.03	41003.60	20807.86	4.81	476
1.74	0.03	812024.38	454574.81	95.19	373

Ret. Time: 1.41

<<<< POSITIVE SPECTRA >>>>

ES-API Positive



Ret. Time: 1.74

ES-API Positive

