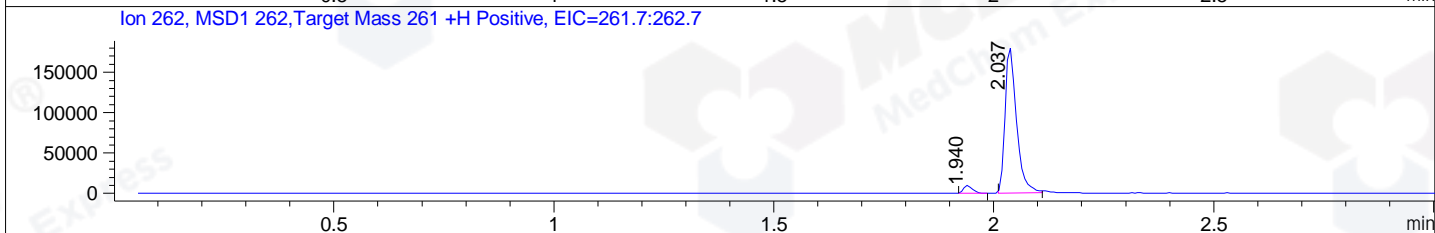
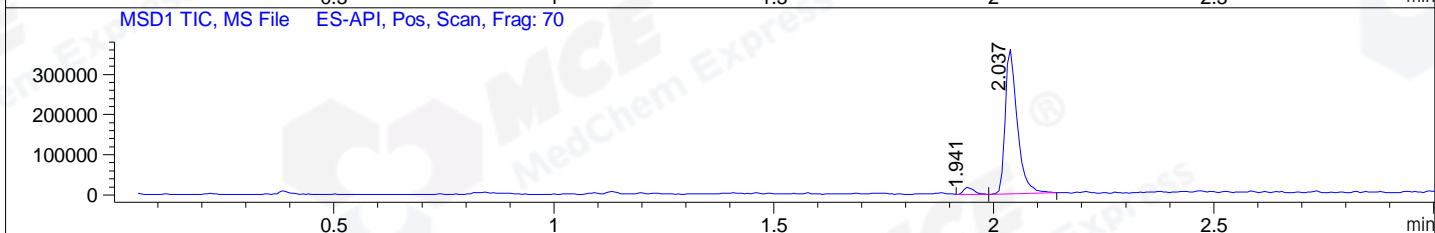
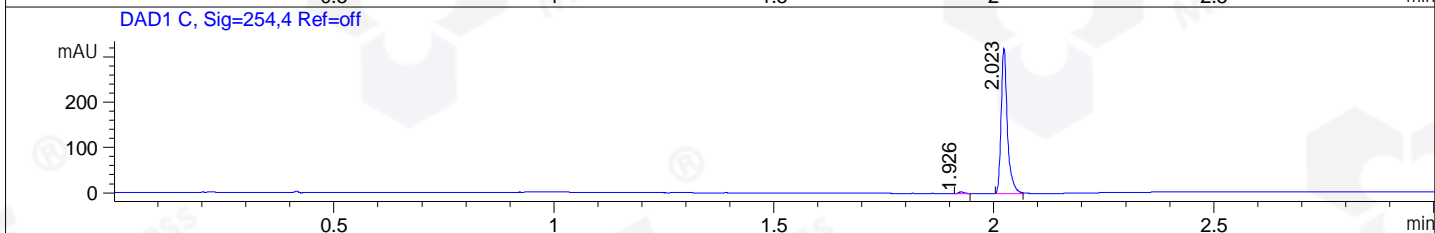
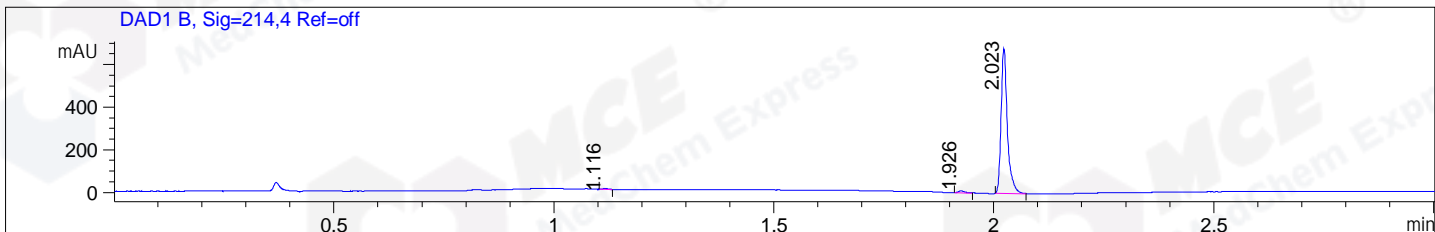


File ..\DATA\2020\20200602\983\BIZ2020-601-WMX8-.D Tgt Mass (CHM):
 Injection Date : 3 Jun 20 1:07 am +0800 Seq. Line : 113
 Sample Name : BIZ2020-601-WMX8 Location : P1-D-04
 Acq. Operator : ZJ_1432 Inj : 1
 Spec. Reported : MS Integration Inj Volume : 0.5 ul
 Acq. Method : D:\Chem32\1\data\2020\20200602\983\1-POS-3MIN.M
 Analysis Method : D:\CHEM32\1\DATA\2020\20200602\983\1-POS-3MIN.M
 Catalog No : HY-136144
 Method Info : Mobile Phase: A: water(0.01%TFA) B:ACN(0.01%TFA)
 Gradient: 5% to 95%B within 1.3 min
 Flow Rate :1.8ml/min
 Column :SunFire C18, 4.6*50mm,3.5um A-RP-607
 Oven Temperature : 45



Integration Results for DAD1 B, Sig=214,4 Ref=off

RetTim	Width	Area	Height	Area%	MS (+)
1.12	0.01	3.04	4.10	0.44	ND
1.93	0.02	10.05	9.92	1.46	262
2.02	0.01	676.47	680.44	98.10	262

Integration Results for DAD1 C, Sig=254,4 Ref=off

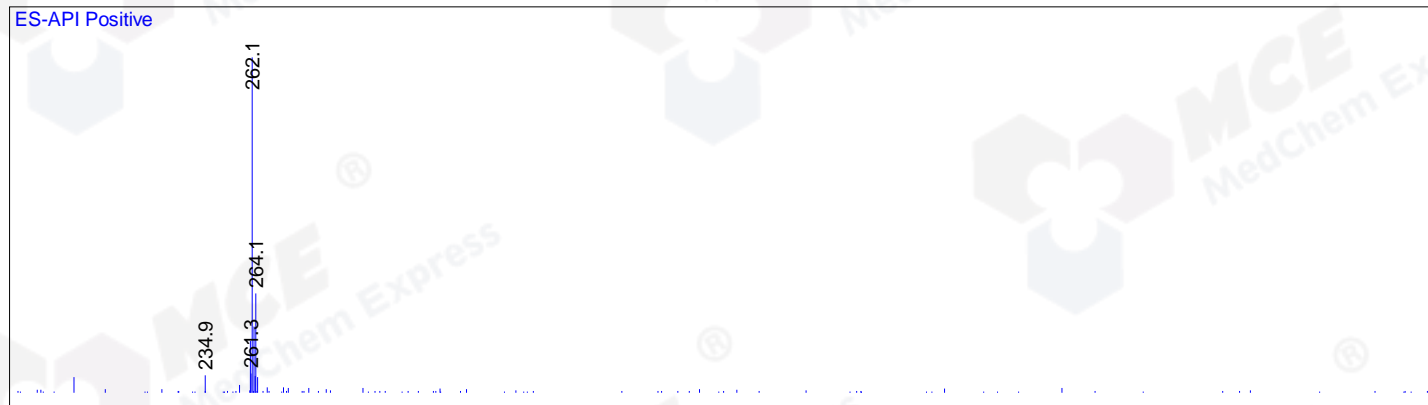
RetTim	Width	Area	Height	Area%	MS (+)
1.93	0.01	4.01	4.25	1.25	262
2.02	0.01	316.62	321.11	98.75	262

Integration Results for MSD1 TIC, MS File

RetTim	Width	Area	Height	Area%	MS (+)
1.94	0.03	27751.69	18086.54	3.89	262
2.04	0.03	686327.38	360838.47	96.11	262

Ret. Time: 1.94

<<<< POSITIVE SPECTRA >>>>



Ret. Time: 2.04

