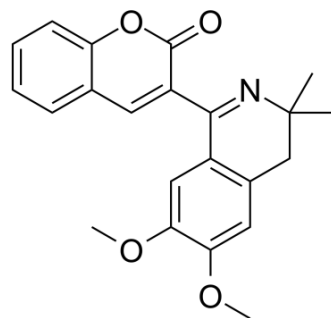


TRPC6-PAM-C20

Cat. No.:	HY-136190
CAS No.:	667427-75-0
Molecular Formula:	C ₂₂ H ₂₁ NO ₄
Molecular Weight:	363.41
Target:	TRP Channel
Pathway:	Membrane Transporter/Ion Channel; Neuronal Signaling
Storage:	Please store the product under the recommended conditions in the Certificate of Analysis.



BIOLOGICAL ACTIVITY

Description

TRPC6-PAM-C20 is a selective TRPC6 positive allosteric modulator. TRPC6-PAM-C20 selectively activates TRPC6 over other TRP channels and also activates TRPA1. TRPC6-PAM-C20 induces transient increase in intracellular Ca²⁺ in HEK cells expressing TRPC6 (EC₅₀=2.37 μM).

Caution: Product has not been fully validated for medical applications. For research use only.

Tel: 609-228-6898

Fax: 609-228-5909

E-mail: tech@MedChemExpress.com

Address: 1 Deer Park Dr, Suite Q, Monmouth Junction, NJ 08852, USA