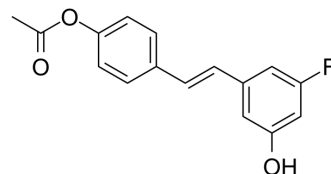


Resveratrol analog 2

Cat. No.:	HY-136204
CAS No.:	915378-82-4
Molecular Formula:	C ₁₆ H ₁₃ FO ₃
Molecular Weight:	272.27
Target:	IKK; Autophagy; Mitophagy; Sirtuin
Pathway:	NF-κB; Autophagy; Cell Cycle/DNA Damage; Epigenetics
Storage:	Please store the product under the recommended conditions in the Certificate of Analysis.



BIOLOGICAL ACTIVITY

Description	Resveratrol analog 2 is an analog of Resveratrol (HY-16561). Resveratrol is a natural polyphenolic phytoalexin that possesses anti-oxidant, anti-inflammatory, cardioprotective, and anti-cancer properties ^[1] .
IC ₅₀ & Target	IC50: Resveratrol analog ^[1]

REFERENCES

[1]. Liu, Jing, "Synthesis of Resveratrol and Its Analogs, Phase-Transfer Catalyzed Asymmetric Glycolate Aldol Reaction, and Total Synthesis of 8,9-Methylamido-Geldanamycin" (2007). All Theses and Dissertations. 1415.

Caution: Product has not been fully validated for medical applications. For research use only.

Tel: 609-228-6898

Fax: 609-228-5909

E-mail: tech@MedChemExpress.com

Address: 1 Deer Park Dr, Suite Q, Monmouth Junction, NJ 08852, USA