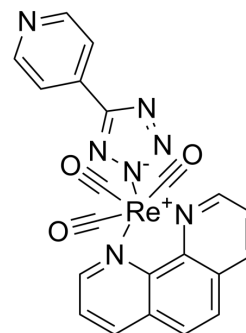


Endoplasmic reticulum dye 1

Cat. No.:	HY-136213		
CAS No.:	1404104-40-0		
Molecular Formula:	C ₂₁ H ₁₂ N ₇ O ₃ Re		
Molecular Weight:	596.57		
Target:	Others		
Pathway:	Others		
Storage:	Powder	-20°C	3 years
		4°C	2 years
	In solvent	-80°C	6 months
		-20°C	1 month



SOLVENT & SOLUBILITY

In Vitro

DMSO : ≥ 33.33 mg/mL (55.87 mM)
 * "≥" means soluble, but saturation unknown.

	Solvent Concentration	Mass		
		1 mg	5 mg	10 mg
Preparing Stock Solutions	1 mM	1.6762 mL	8.3812 mL	16.7625 mL
	5 mM	0.3352 mL	1.6762 mL	3.3525 mL
	10 mM	0.1676 mL	0.8381 mL	1.6762 mL

Please refer to the solubility information to select the appropriate solvent.

BIOLOGICAL ACTIVITY

Description

Endoplasmic reticulum dye 1 is a promising live cell imaging agent for the detection of exocytotic events at the plasma membrane. Endoplasmic reticulum dye 1 shows low cytotoxicity, resistance to photobleaching, which is ideal for imaging either short- or long-time courses^[1].

REFERENCES

[1]. Christie A Bader, et al. Imaging nuclear, endoplasmic reticulum and plasma membrane events in real time. FEBS Lett. 2016 Sep;590(18):3051-60.

Caution: Product has not been fully validated for medical applications. For research use only.

Tel: 609-228-6898

Fax: 609-228-5909

E-mail: tech@MedChemExpress.com

Address: 1 Deer Park Dr, Suite Q, Monmouth Junction, NJ 08852, USA