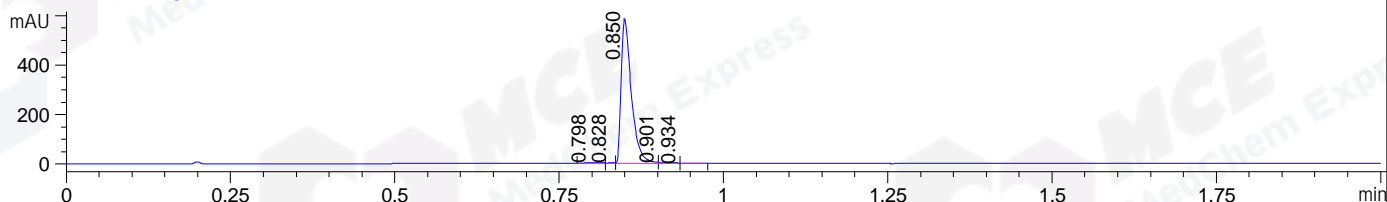
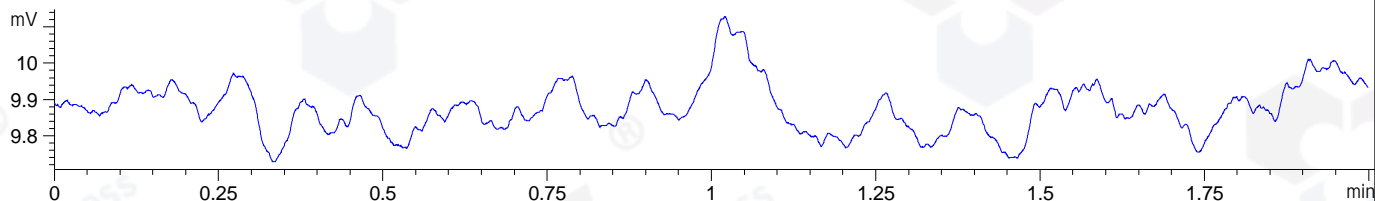


File ..3\Data\2021\20210128\WSW9011-007-1-001531.D Tgt Mass (CHM):
 Injection Date : 28 Jan 21 5:53 pm +0800 Seq. Line : 0
 Sample Name : WSW9011-007-1 Location : P2-F-05
 Acq. Operator : LXH_1473 Inj : 1
 Spec. Reported : MS Integration Inj Volume : 0.2 ul
 Acq. Method : D:\LCMS\Methods\1-POS-UPLC2.0MIN(0.8ML)-(150-1000).M
 Analysis Method : D:\LCMS03\METHODS\1-POS-UPLC2.0MIN(0.8ML)-(150-1000).M
 CAS NO. : 2349356-39-2 Walkup method: '1-POS-2MIN' Target:
 Method Info : Mobile Phase: A: water(0.01%TFA) B:ACN(0.01%TFA)
 Gradient: 5% to 95%B within 0.6 min
 Flow Rate : 0.8ml/min
 Column : Poroshell 120 EC- C18, 2.1*50mm,1.9um A-RP-677
 Oven Temperature : 45C

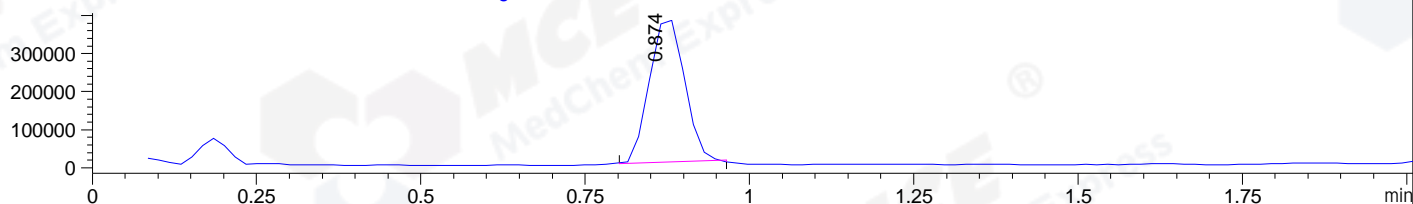
DAD1 B, Sig=254,4 Ref=off



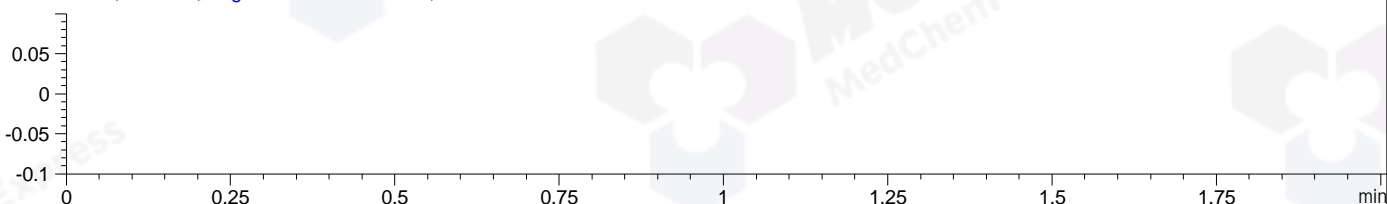
ELS1 A, ELSD Signal



MSD1 TIC, MS File ES-API, Pos, Scan, Frag: 70



Ion 1, MSD1 1, Target Mass 0 +H Positive, EIC=0.7:1.7



Integration Results for DAD1 B, Sig=254,4 Ref=off

RetTim	Width	Area	Height	Area%	MS (+)
0.80	0.03	5.02	3.26	0.78	186
0.83	0.01	1.73	2.52	0.27	820
0.85	0.02	630.82	587.89	98.08	820
0.90	0.02	4.12	3.95	0.64	820
0.93	0.02	1.45	1.08	0.23	820

Integration Results for ELS1 A, ELSD Signal

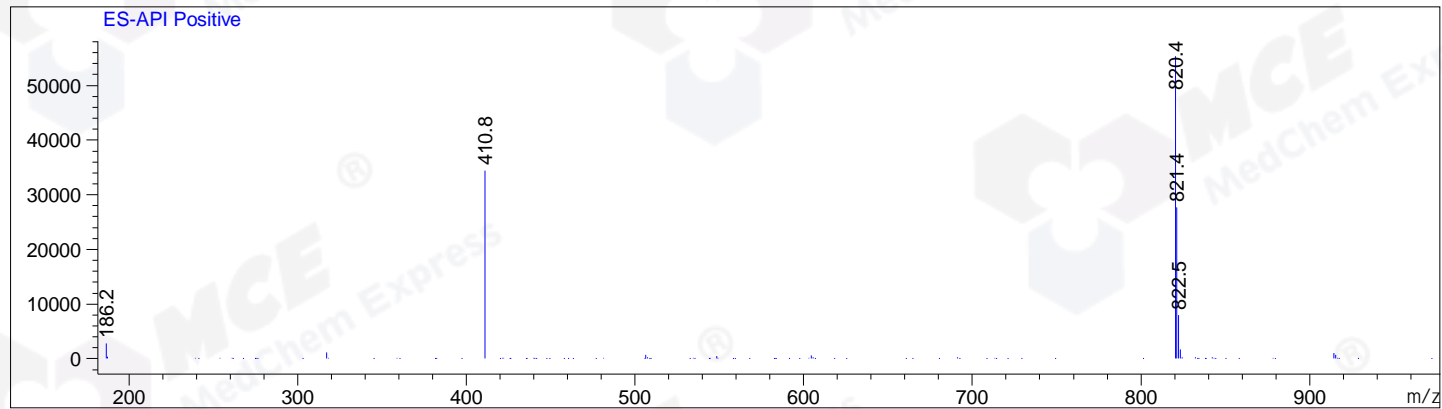
RetTim	Width	Area	Height	Area%	MS (+)
--------	-------	------	--------	-------	--------

Integration Results for MSD1 TIC, MS File

RetTim	Width	Area	Height	Area%	MS (+)
0.87	0.06	1383194.38	390735.88	100.00	820

Ret. Time: 0.87

<<<< POSITIVE SPECTRA >>>>



*** End of Report ***