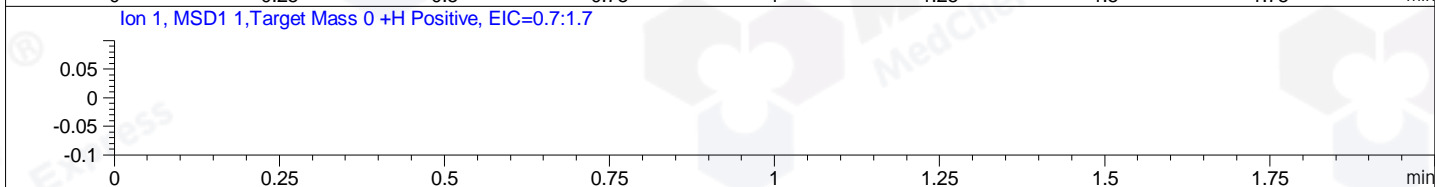
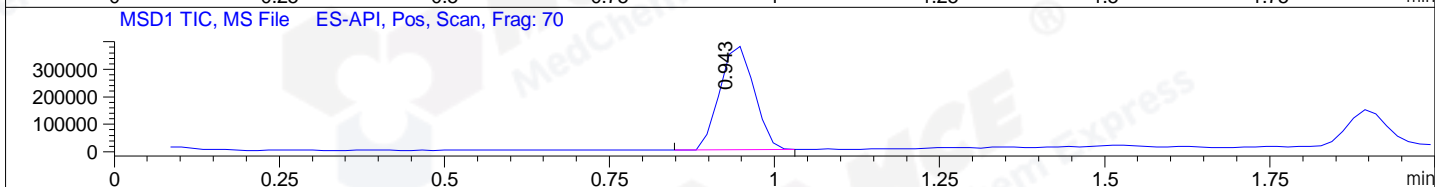
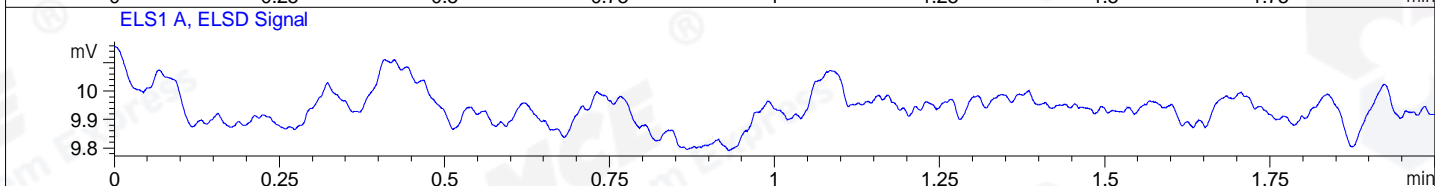
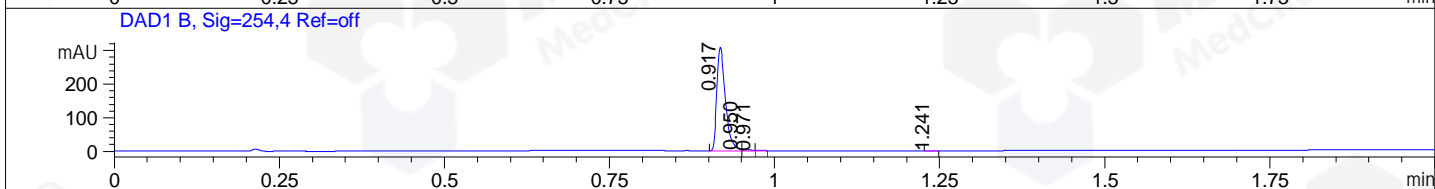
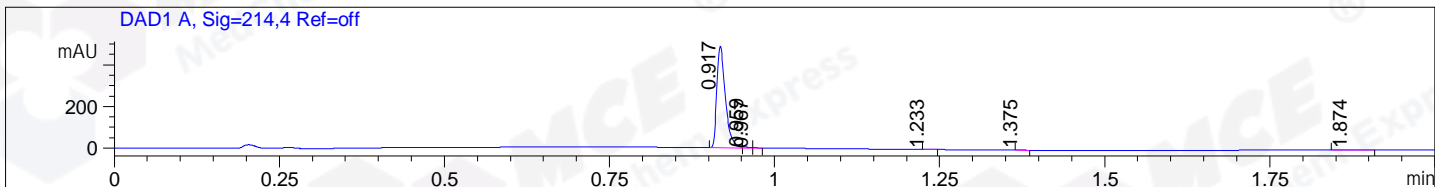


File ..0201230 2020-12-30 08-02-57\XBB8557-017-1.D Tgt Mass (CHM):
 Injection Date : 30 Dec 20 5:00 pm +0800 Seq. Line : 121
 Sample Name : XBB8557-017-1 Location : P2-D-03
 Acq. Operator : SYSTEM Inj : 1
 Spec. Reported : MS Integration Inj Volume : 0.2 ul
 Acq. Method : D:\LCMS03\Data\20201230\20201230 2020-12-30 08-02-57\1-POS-UPLC2.0MIN(0.8ML
 Analysis Method : D:\LCMS03\Data\20201230\20201230 2020-12-30 08-02-57\1-POS-UPLC2.0MIN(0.8ML
 CAS NO. : 2374971-81-8
 Method Info : Mobile Phase: A: water(0.01%TFA) B:ACN(0.01%TFA)
 Gradient: 5% to 95%B within 0.6 min
 Flow Rate :0.8ml/min
 Column :Poroshell 120 EC- C18, 2.1*50mm,1.9um A-RP-677
 Oven Temperature : 45C



Integration Results for DAD1 A, Sig=214,4 Ref=off

RetTim	Width	Area	Height	Area%	MS (+)
0.92	0.02	439.46	488.10	99.11	451
0.96	0.01	2.51	4.61	0.57	451
0.97	0.01	0.42	1.23	0.09	451
1.23	0.01	0.29	0.38	0.06	548
1.37	0.01	0.36	0.55	0.08	672
1.87	0.04	0.38	0.16	0.09	320

Integration Results for DAD1 B, Sig=254,4 Ref=off

RetTim	Width	Area	Height	Area%	MS (+)
0.92	0.01	277.71	309.39	98.86	451
0.95	0.01	2.72	3.52	0.97	451
0.97	0.01	0.31	0.75	0.11	451
1.24	0.02	0.18	0.19	0.06	548

Integration Results for ELS1 A, ELSD Signal

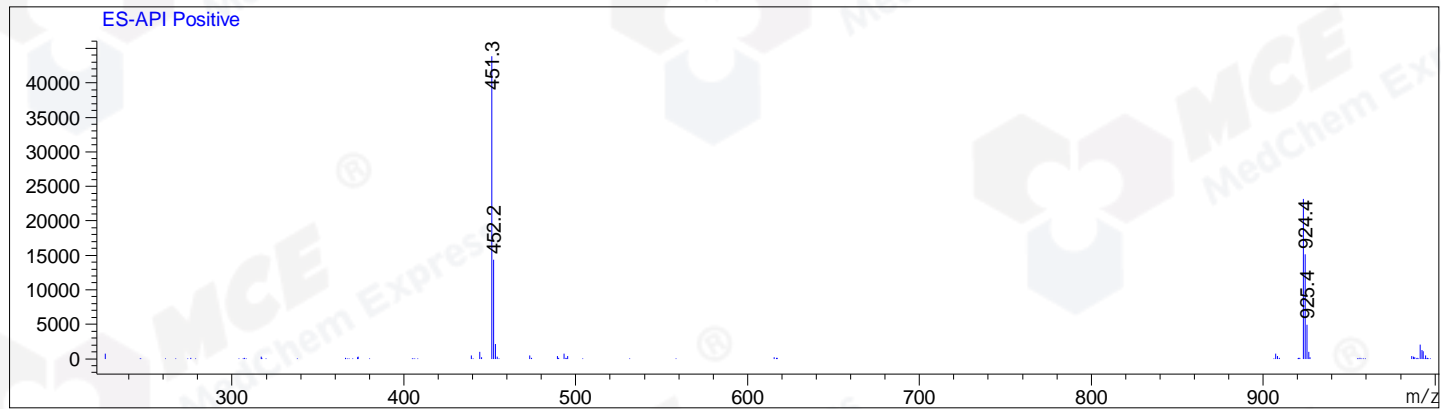
RetTim	Width	Area	Height	Area%	MS (+)
--------	-------	------	--------	-------	--------

Integration Results for MSD1 TIC, MS File

RetTim	Width	Area	Height	Area%	MS(+)
0.94	0.06	1366936.88	382105.19	100.00	451

Ret. Time: 0.94

<<<< POSITIVE SPECTRA >>>>



*** End of Report ***