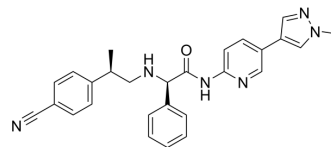


(R,R)-CPI-1612

Cat. No.:	HY-136285A		
CAS No.:	2374972-35-5		
Molecular Formula:	C ₂₇ H ₂₆ N ₆ O		
Molecular Weight:	450.53		
Target:	Others		
Pathway:	Others		
Storage:	Powder	-20°C	3 years
		4°C	2 years
	In solvent	-80°C	6 months
		-20°C	1 month



SOLVENT & SOLUBILITY

In Vitro	DMSO : 130 mg/mL (288.55 mM; Need ultrasonic)			
		Solvent Concentration	Mass	
			1 mg	5 mg
			10 mg	
Preparing Stock Solutions	1 mM	2.2196 mL	11.0980 mL	22.1961 mL
	5 mM	0.4439 mL	2.2196 mL	4.4392 mL
	10 mM	0.2220 mL	1.1098 mL	2.2196 mL
Please refer to the solubility information to select the appropriate solvent.				
In Vivo	1. Add each solvent one by one: 10% DMSO >> 90% corn oil Solubility: ≥ 3.25 mg/mL (7.21 mM); Clear solution			

BIOLOGICAL ACTIVITY

Description	(R,R)-CPI-1612 is the isomer of CPI-1612 (HY-136285), and can be used as an experimental control. CPI-1612 is a highly potent, orally active EP300/CBP histone acetyltransferase (HAT) inhibitor with an IC ₅₀ of 8.1 nM for EP300 HAT. CPI-1612 has an anticancer activity ^[1] .
--------------------	---

REFERENCES

[1]. Jonathan E Wilson, et al. Discovery of CPI-1612: A Potent, Selective, and Orally Bioavailable EP300/CBP Histone Acetyltransferase Inhibitor. ACS Med Chem Lett. 2020 Apr 23;11(6):1324-1329.

Caution: Product has not been fully validated for medical applications. For research use only.

Tel: 609-228-6898

Fax: 609-228-5909

E-mail: tech@MedChemExpress.com

Address: 1 Deer Park Dr, Suite Q, Monmouth Junction, NJ 08852, USA