

File ..00723 2020-07-23 08-36-42\WGY7918-005-4_1.D Tgt Mass (CHM):

Injection Date : 23 Jul 20 2:02 pm +0800 Seq. Line : 83

Sample Name : WGY7918-005-4 Location : P1-C-06

Acq. Operator : SYSTEM Inj : 1

Spec. Reported : MS Integration Inj Volume : 0.2 ul

Acq. Method : D:\LCMS03\Data\20200723\20200723 2020-07-23 08-36-42\1-POS-UPLC2.0MIN(0.8ML)

Analysis Method : D:\LCMS03\Data\20200723\20200723 2020-07-23 08-36-42\1-POS-UPLC2.0MIN(0.8ML)

Catalog No : HY-136303

Method Info : Mobile Phase: A: water(0.01%TFA) B:ACN(0.01%TFA)

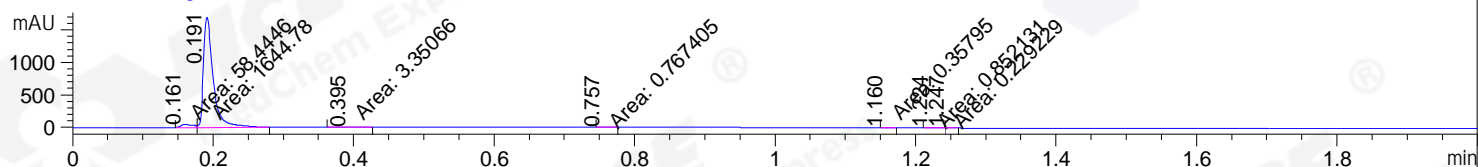
Gradient: 5% to 95%B within 0.6 min

Flow Rate :0.8ml/min

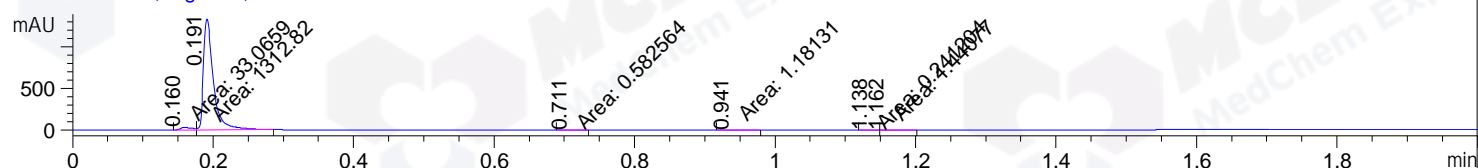
Column :Poroshell 120 EC- C18, 2.1*50mm,1.9um A-RP-517

Oven Temperature : 45C

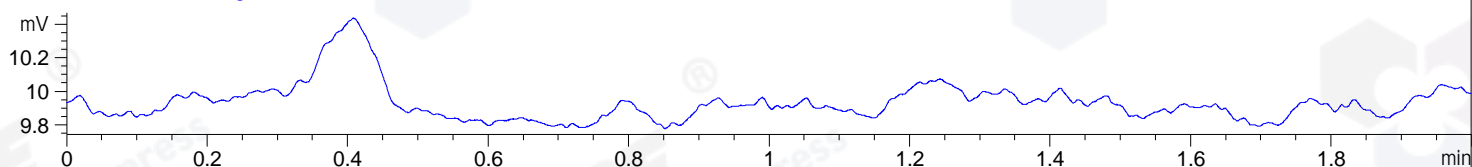
DAD1 A, Sig=214,4 Ref=off



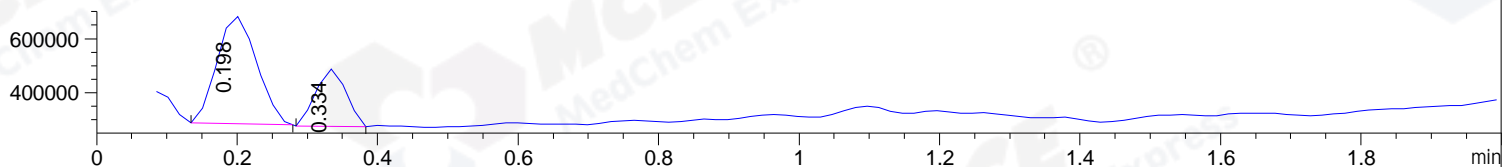
DAD1 B, Sig=254,4 Ref=off



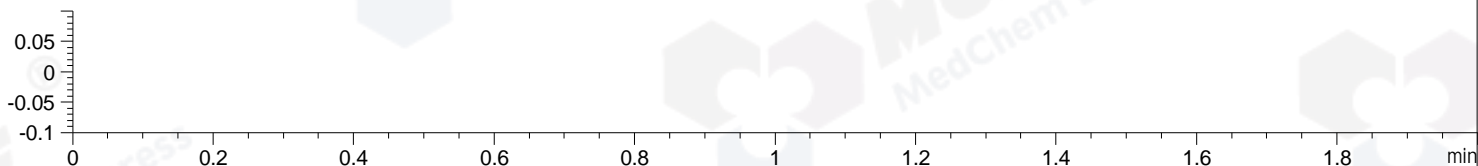
ELS1 A, ELSD Signal



MSD1 TIC, MS File ES-API, Pos, Scan, Frag: 70



Ion 1, MSD1 1, Target Mass 0 +H Positive, EIC=0.7:1.7



Integration Results for DAD1 A, Sig=214,4 Ref=off

RetTim	Width	Area	Height	Area%	MS (+)
0.16	0.02	58.44	45.79	3.42	161
0.19	0.02	1644.78	1697.19	96.25	161
0.40	0.04	3.35	1.56	0.20	161
0.76	0.02	0.77	0.82	0.04	161
1.16	0.01	0.36	0.45	0.02	161
1.22	0.02	0.85	0.73	0.05	161
1.25	0.01	0.23	0.29	0.01	161

Integration Results for DAD1 B, Sig=254,4 Ref=off

RetTim	Width	Area	Height	Area%	MS (+)
0.16	0.02	33.07	29.92	2.45	161
0.19	0.02	1312.82	1338.51	97.29	161
0.71	0.02	0.58	0.39	0.04	161
0.94	0.02	1.18	0.93	0.09	161
1.14	0.02	0.24	0.16	0.02	161
1.16	0.02	1.44	1.02	0.11	161

Integration Results for ELS1 A, ELSD Signal

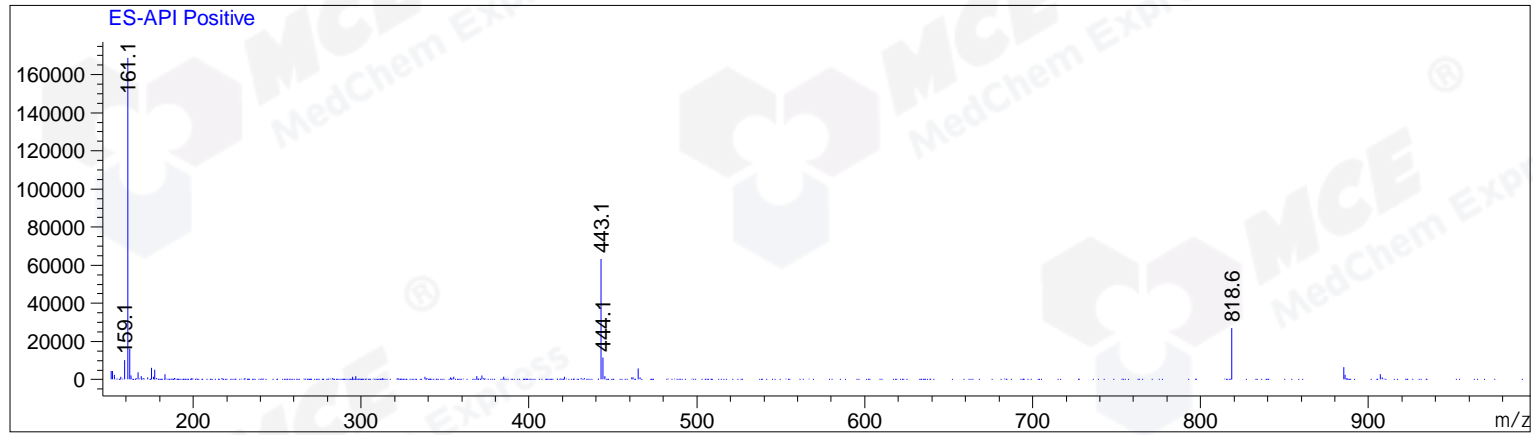
RetTim	Width	Area	Height	Area%	MS (+)
--------	-------	------	--------	-------	--------

Integration Results for MSD1 TIC, MS File

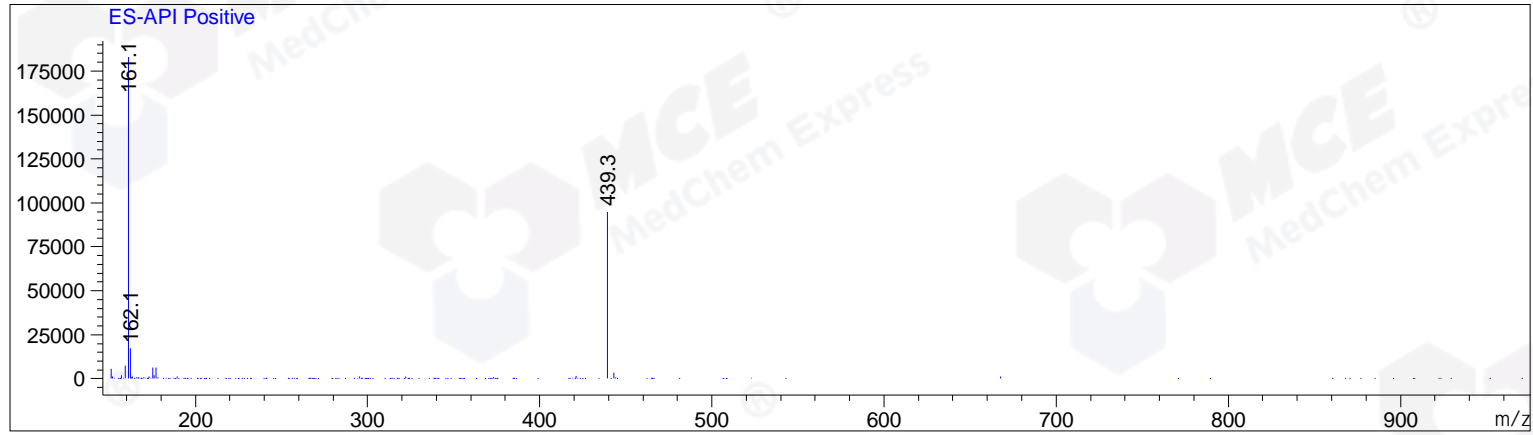
RetTim	Width	Area	Height	Area%	MS (+)
0.20	0.06	1570437.88	397975.72	71.16	161
0.33	0.05	636425.56	212626.08	28.84	161

Ret. Time: 0.20

<<<< POSITIVE SPECTRA >>>>



Ret. Time: 0.33



*** End of Report ***