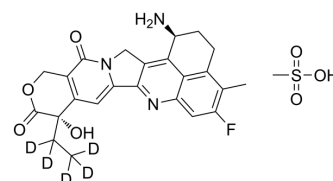


## Exatecan-d<sub>5</sub> mesylate

<b>Cat. No.:</b>	HY-13631AS
<b>CAS No.:</b>	2819276-88-3
<b>Molecular Formula:</b>	C <sub>25</sub> H <sub>21</sub> D <sub>5</sub> FN <sub>3</sub> O <sub>7</sub> S
<b>Molecular Weight:</b>	536.58
<b>Target:</b>	ADC Cytotoxin; Topoisomerase
<b>Pathway:</b>	Antibody-drug Conjugate/ADC Related; Cell Cycle/DNA Damage
<b>Storage:</b>	4°C, sealed storage, away from moisture and light * In solvent : -80°C, 2 years; -20°C, 1 year (sealed storage, away from moisture and light)



### SOLVENT & SOLUBILITY

#### In Vitro

DMSO : 4.67 mg/mL (8.70 mM; ultrasonic and warming and heat to 60°C)

	Solvent Concentration	Mass	1 mg	5 mg	10 mg
Preparing Stock Solutions	1 mM		1.8637 mL	9.3183 mL	18.6365 mL
	5 mM		0.3727 mL	1.8637 mL	3.7273 mL
	10 mM		---	---	---

Please refer to the solubility information to select the appropriate solvent.

### BIOLOGICAL ACTIVITY

<b>Description</b>	Exatecan-d <sub>5</sub> (mesylate) is deuterium labeled Exatecan mesylate. Exatecan mesylate is a DNA topoisomerase I inhibitor, with an IC <sub>50</sub> of 0.975 µg/mL[1].
<b>IC<sub>50</sub> &amp; Target</b>	Camptothecins

### REFERENCES

[1]. Mitsui I, et al. A new water-soluble camptothecin derivative, DX-8951f, exhibits potent antitumor activity against human tumors in vitro and in vivo. Jpn J Cancer Res. 1995 Aug;86(8):776-82.

---

**Caution: Product has not been fully validated for medical applications. For research use only.**

Tel: 609-228-6898

Fax: 609-228-5909

E-mail: [tech@MedChemExpress.com](mailto:tech@MedChemExpress.com)

Address: 1 Deer Park Dr, Suite Q, Monmouth Junction, NJ 08852, USA