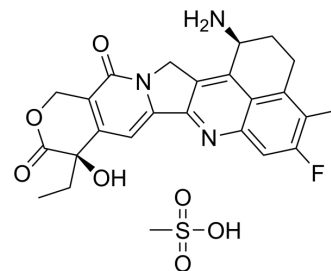


(1S,9R)-Exatecan mesylate

Cat. No.:	HY-13631I
CAS No.:	2938875-54-6
Molecular Formula:	C ₂₅ H ₂₆ FN ₃ O ₇ S
Molecular Weight:	531.55
Target:	ADC Cytotoxin; Topoisomerase
Pathway:	Antibody-drug Conjugate/ADC Related; Cell Cycle/DNA Damage
Storage:	4°C, sealed storage, away from moisture
	* In solvent : -80°C, 6 months; -20°C, 1 month (sealed storage, away from moisture)



SOLVENT & SOLUBILITY

In Vitro	DMSO : 50 mg/mL (94.06 mM; Need ultrasonic)					
	Preparing Stock Solutions	<div><div>Solvent</div><div>Concentration</div></div>	Mass	1 mg	5 mg	10 mg
		1 mM	1.8813 mL	9.4065 mL	18.8129 mL	
		5 mM	0.3763 mL	1.8813 mL	3.7626 mL	
		10 mM	0.1881 mL	0.9406 mL	1.8813 mL	
Please refer to the solubility information to select the appropriate solvent.						

BIOLOGICAL ACTIVITY

Description	(1S,9R)-Exatecan mesylate ((1S,9R)-DX8951f) is an isomer of Exatecan mesylate (HY-13631A). Exatecan mesylate (DX8951f) is an inhibitor of DNA topoisomerase I with an IC ₅₀ of 2.2 μM (0.975 μg/mL) and can be used in cancer research ^[1] .
IC ₅₀ & Target	Camptothecins

REFERENCES

[1]. Mitsui I, et al. A new water-soluble camptothecin derivative, DX-8951f, exhibits potent antitumor activity against human tumors in vitro and in vivo. Jpn J Cancer Res. 1995 Aug;86(8):776-82.

Caution: Product has not been fully validated for medical applications. For research use only.

Tel: 609-228-6898

Fax: 609-228-5909

E-mail: tech@MedChemExpress.com

Address: 1 Deer Park Dr, Suite Q, Monmouth Junction, NJ 08852, USA