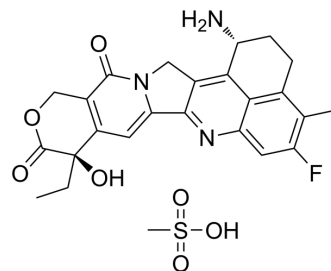


## (1R,9R)-Exatecan mesylate

<b>Cat. No.:</b>	HY-13631J
<b>CAS No.:</b>	2938875-39-7
<b>Molecular Formula:</b>	C <sub>25</sub> H <sub>26</sub> FN <sub>3</sub> O <sub>7</sub> S
<b>Molecular Weight:</b>	531.55
<b>Target:</b>	ADC Cytotoxin; Topoisomerase
<b>Pathway:</b>	Antibody-drug Conjugate/ADC Related; Cell Cycle/DNA Damage
<b>Storage:</b>	4°C, stored under nitrogen, away from moisture * In solvent : -80°C, 6 months; -20°C, 1 month (stored under nitrogen, away from moisture)



### SOLVENT & SOLUBILITY

#### In Vitro

DMSO : 16.67 mg/mL (31.36 mM; Need ultrasonic)

Concentration	Mass		
	1 mg	5 mg	10 mg
1 mM	1.8813 mL	9.4065 mL	18.8129 mL
5 mM	0.3763 mL	1.8813 mL	3.7626 mL
10 mM	0.1881 mL	0.9406 mL	1.8813 mL

Please refer to the solubility information to select the appropriate solvent.

### BIOLOGICAL ACTIVITY

#### Description

(1R,9R)-Exatecan mesylate((1R,9R)-DX8951f) is an isomer of Exatecan mesylate (HY-13631A). Exatecan mesylate (DX8951f) is an inhibitor of DNA topoisomerase I with an IC<sub>50</sub> of 2.2 μM (0.975 μg/mL) and can be used in cancer research<sup>[1]</sup>.

#### IC<sub>50</sub> & Target

Camptothecins

### REFERENCES

[1]. Mitsui I, et al. A new water-soluble camptothecin derivative, DX-8951f, exhibits potent antitumor activity against human tumors in vitro and in vivo. Jpn J Cancer Res. 1995 Aug;86(8):776-82.

---

**Caution: Product has not been fully validated for medical applications. For research use only.**

Tel: 609-228-6898

Fax: 609-228-5909

E-mail: [tech@MedChemExpress.com](mailto:tech@MedChemExpress.com)

Address: 1 Deer Park Dr, Suite Q, Monmouth Junction, NJ 08852, USA