

File ..0200918 2020-09-18 13-29-32\WGY8354-003-2.D Tgt Mass (CHM):

Injection Date : 18 Sep 20 3:35 pm +0800 Seq. Line : 30

Sample Name : WGY8354-003-2 Location : P2-A-08

Acq. Operator : SYSTEM Inj : 1

Spec. Reported : MS Integration Inj Volume : 0.2 ul

Acq. Method : D:\LCMS03\Data\20200918\20200918 2020-09-18 13-29-32\1-POS-UPLC2.0MIN(0.8ML

Analysis Method : D:\LCMS03\Data\20200918\20200918 2020-09-18 13-29-32\1-POS-UPLC2.0MIN(0.8ML

CAS NO : 1630760-75-6

Method Info : Mobile Phase: A: water(0.01%TFA) B:ACN(0.01%TFA)

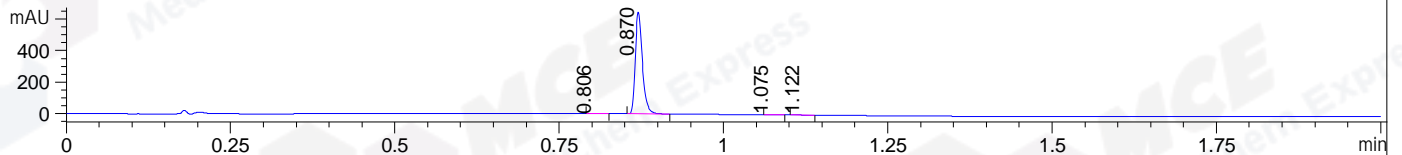
Gradient: 5% to 95%B within 0.6 min

Flow Rate :0.8ml/min

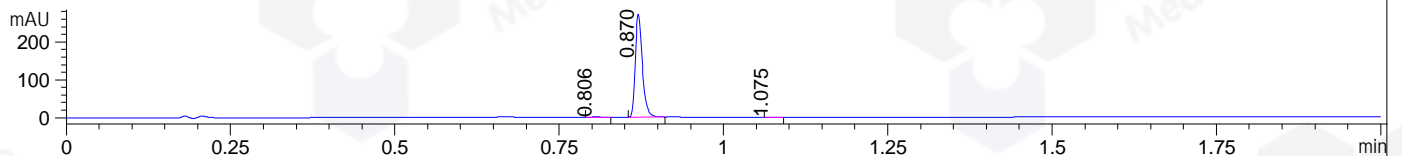
Column :Poroshell 120 EC- C18, 2.1\*50mm,1.9um A-RP-530

Oven Temperature : 45C

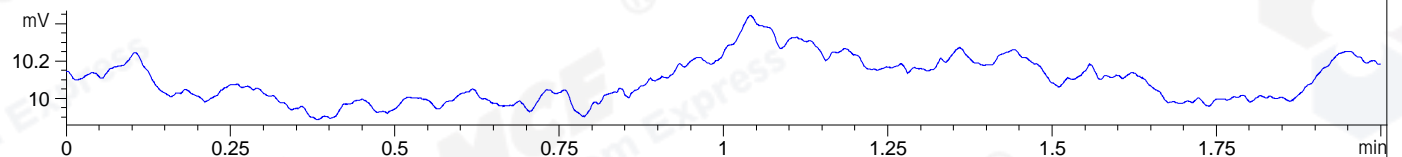
DAD1 A, Sig=214,4 Ref=off



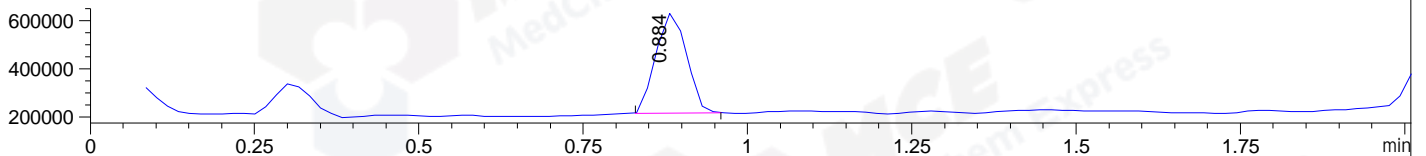
DAD1 B, Sig=254,4 Ref=off



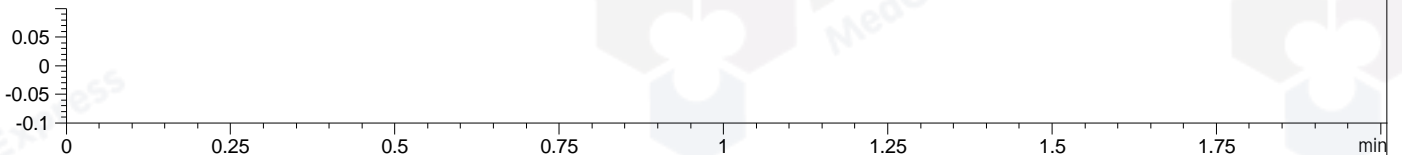
ELS1 A, ELSD Signal



MSD1 TIC, MS File ES-API, Pos, Scan, Frag: 70



Ion 1, MSD1 1, Target Mass 0 +H Positive, EIC=0.7:1.7



Integration Results for DAD1 A, Sig=214,4 Ref=off

RetTim	Width	Area	Height	Area%	MS (+)
0.81	0.02	0.72	0.77	0.15	317
0.87	0.01	485.28	651.35	99.60	292
1.08	0.01	0.63	0.74	0.13	317
1.12	0.02	0.58	0.43	0.12	317

Integration Results for DAD1 B, Sig=254,4 Ref=off

RetTim	Width	Area	Height	Area%	MS (+)
0.81	0.01	0.46	0.53	0.23	317
0.87	0.01	203.33	273.45	99.60	292
1.08	0.01	0.35	0.43	0.17	317

Integration Results for ELS1 A, ELSD Signal

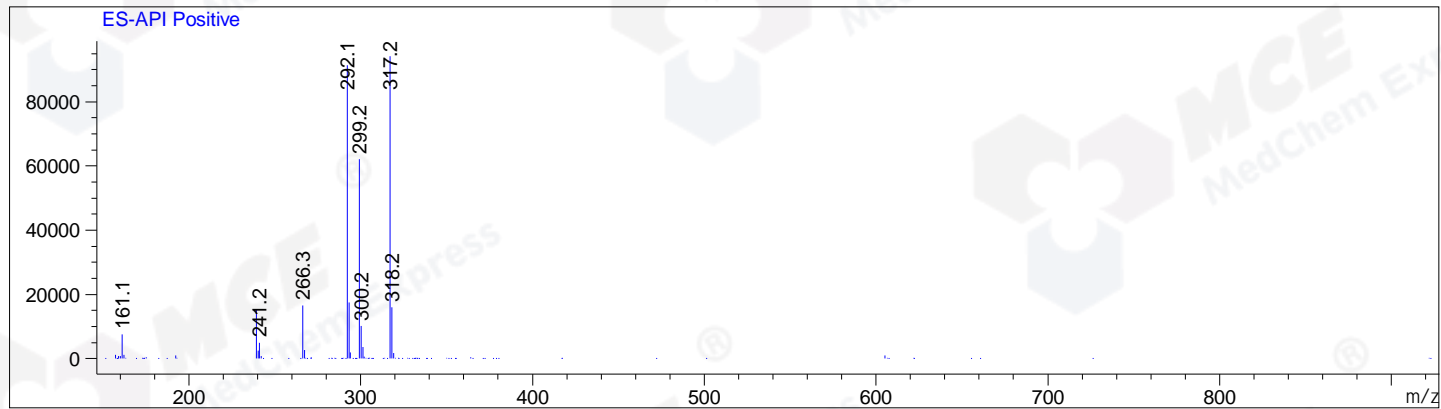
RetTim	Width	Area	Height	Area%	MS (+)
--------	-------	------	--------	-------	--------

## Integration Results for MSD1 TIC, MS File

RetTim	Width	Area	Height	Area%	MS(+)
0.88	0.05	1338051.25	424471.81	100.00	317

Ret. Time: 0.88

<<<< POSITIVE SPECTRA >>>>



\*\*\* End of Report \*\*\*