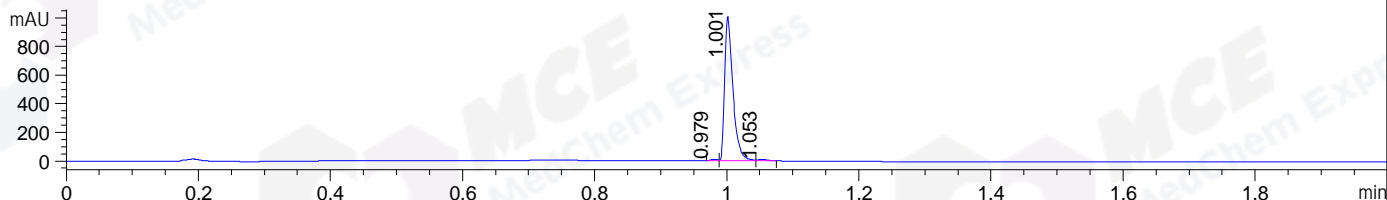
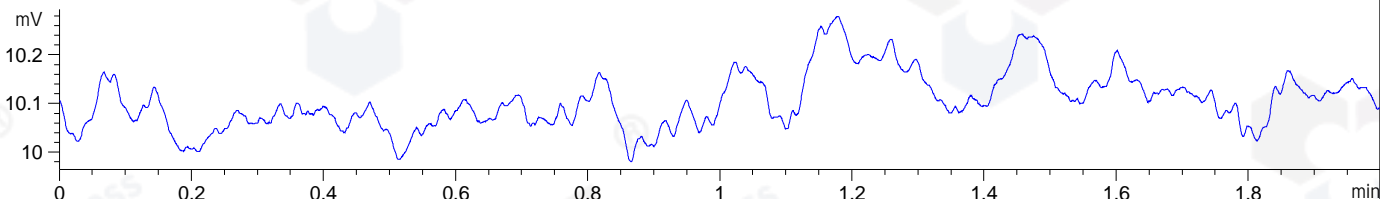


File ..0617 2020-06-17 09-44-40\ZG7973-003-2_1_1.D Tgt Mass (CHM):
Injection Date : 17 Jun 20 1:21 pm +0800 Seq. Line : 49
Sample Name : ZG7973-003-2_1 Location : P1-B-02
Acq. Operator : SYSTEM Inj : 1
Spec. Reported : MS Integration Inj Volume : 0.05 ul
Acq. Method : D:\LCMS03\Data\20200617\20200617 2020-06-17 09-44-40\1-POS-UPLC2.0MIN(0.8ML) .1
Analysis Method : D:\LCMS03\Data\20200617\20200617 2020-06-17 09-44-40\1-POS-UPLC2.0MIN(0.8ML) .1
Catalog No : HY-136453
Method Info : Mobile Phase: A: water(0.01%TFA) B:ACN(0.01%TFA)
Gradient: 5% to 95%B within 0.6 min
Flow Rate :0.8ml/min
Column :Poroshell 120 EC- C18, 2.1*50mm,1.9um A-RP-530
Oven Temperature : 45C

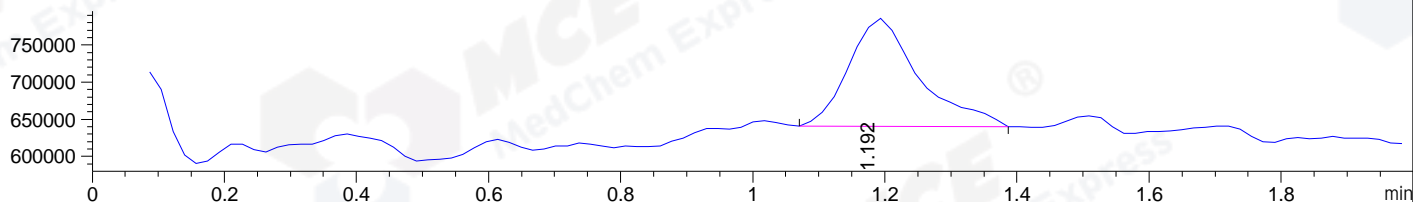
DAD1 A, Sig=214,4 Ref=off



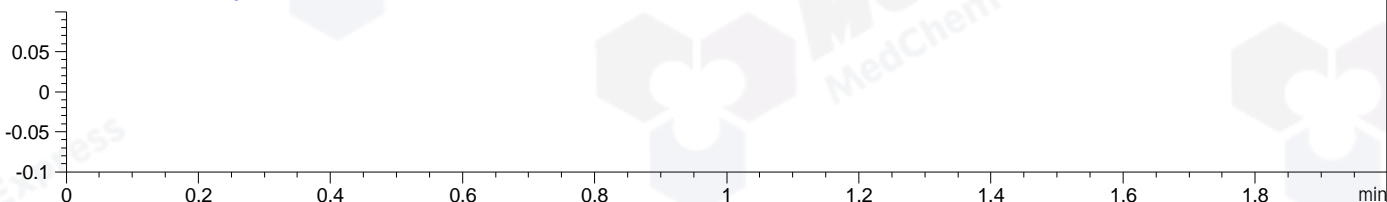
ELS1 A, ELSD Signal



MSD1 TIC, MS File ES-API, Pos, Scan, Frag: 70



Ion 1, MSD1 1, Target Mass 0 +H Positive, EIC=0.7:1.7



Integration Results for DAD1 A, Sig=214,4 Ref=off

RetTim	Width	Area	Height	Area%	MS (+)
0.98	0.01	7.72	11.30	0.86	145
1.00	0.01	879.94	1013.26	98.06	145
1.05	0.02	9.67	10.61	1.08	145

Integration Results for ELS1 A, ELSD Signal

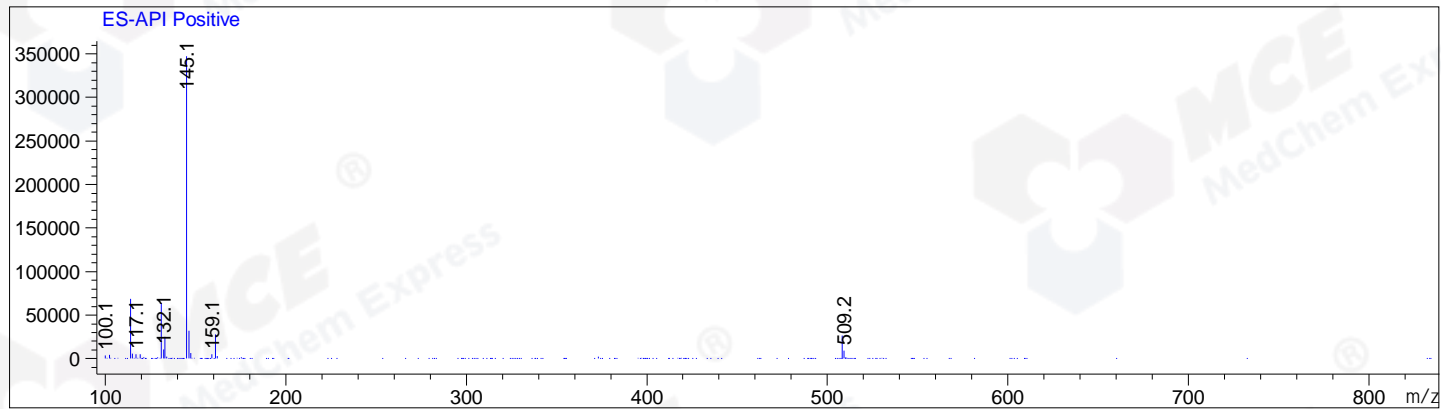
RetTim	Width	Area	Height	Area%	MS (+)
--------	-------	------	--------	-------	--------

Integration Results for MSD1 TIC, MS File

RetTim	Width	Area	Height	Area%	MS (+)
1.19	0.11	1078266.75	145696.56	100.00	145

Ret. Time: 1.19

<<<< POSITIVE SPECTRA >>>>



*** End of Report ***