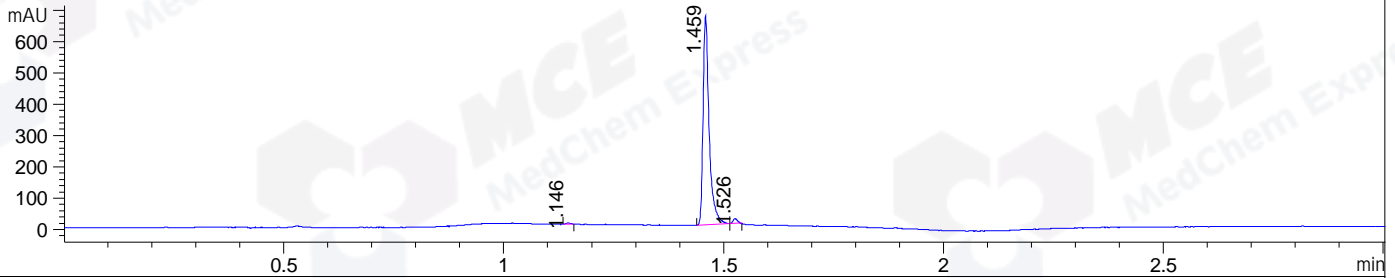


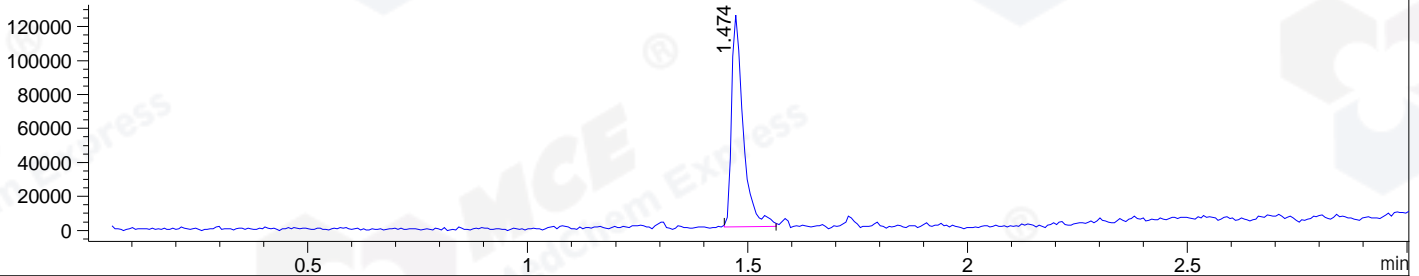
File ..ATA\2020\20200701\1023\BIZ2020-629-WMX13-.D Tgt Mass (CHM):

Injection Date : 1 Jul 20 3:17 pm +0800 Seq. Line : 80  
 Sample Name : BIZ2020-629-WMX13 Location : P1-B-04  
 Acq. Operator : ZJ\_1432 Inj : 1  
 Spec. Reported : MS Integration Inj Volume : 0.2 ul  
 Acq. Method : D:\Chem32\1\data\2020\20200701\1023\1-POS-3MIN.M  
 Analysis Method : D:\CHEM32\1\DATA\2020\20200701\1023\1-POS-3MIN.M  
 Catalog No : HY-136485  
 Method Info : Mobile Phase: A: water(0.01%TFA) B:ACN(0.01%TFA)  
 Gradient: 5% to 95%B within 1.3 min  
 Flow Rate :1.8ml/min  
 Column :SunFire C18, 4.6\*50mm,3.5um A-RP-607  
 Oven Temperature : 45

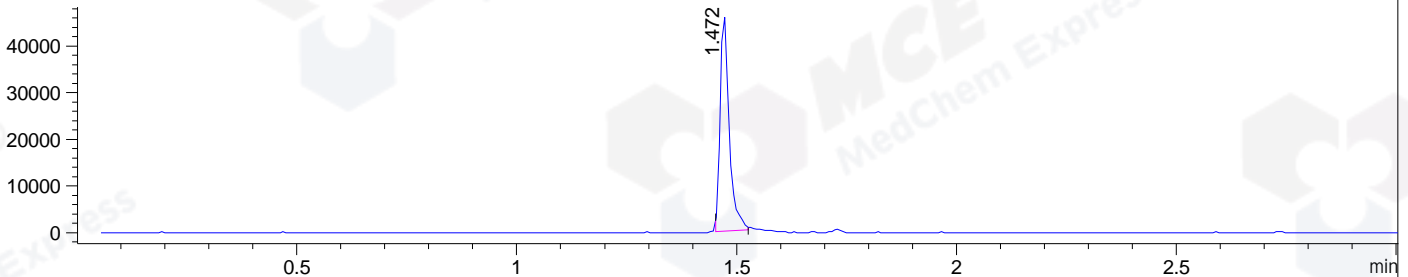
DAD1 B, Sig=214,4 Ref=off



MSD1 TIC, MS File ES-API, Pos, Scan, Frag: 70



Ion 233, MSD1 233, Target Mass 232 +H Positive, EIC=232.7:233.7



Integration Results for DAD1 B, Sig=214,4 Ref=off

RetTim	Width	Area	Height	Area%	MS (+)
1.15	0.01	1.91	2.91	0.29	ND
1.46	0.02	641.91	667.12	98.23	233
1.53	0.01	9.68	14.43	1.48	233

Integration Results for MSD1 TIC, MS File

RetTim	Width	Area	Height	Area%	MS (+)
1.47	0.03	231627.95	124747.16	100.00	233

Ret. Time: 1.47

<<<< POSITIVE SPECTRA >>>>

