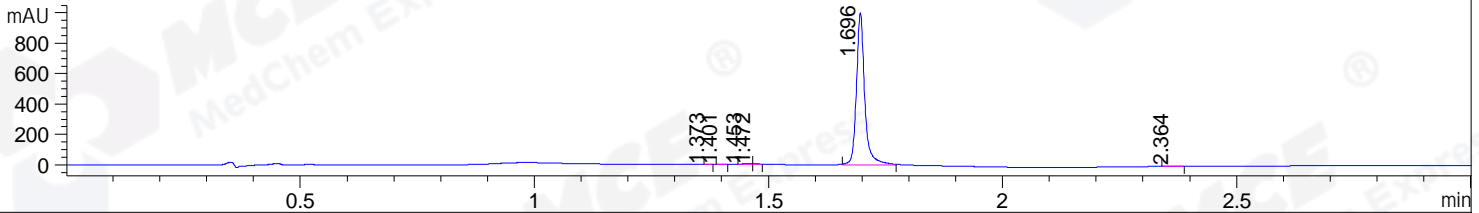
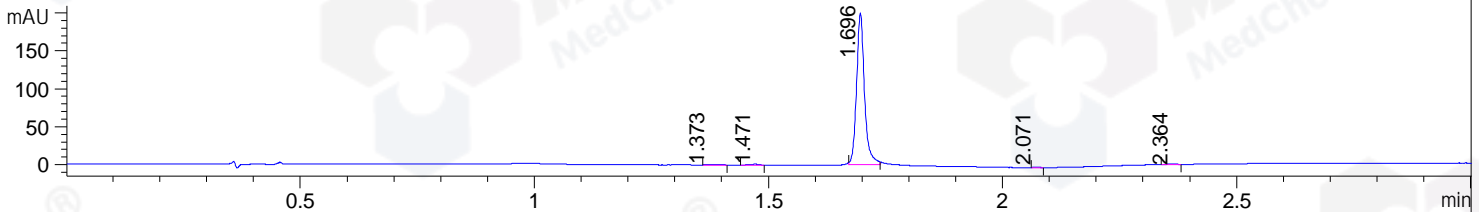


File ..1\DATA\2019\20190419\558\BIZ2019-418-WYQ5.D Tgt Mass (CHM):
 Injection Date : 19 Apr 19 10:17 am +0800 Seq. Line : 15
 Sample Name : BIZ2019-418-WYQ5 Location : P1-C-05
 Acq. Operator : LQ_1052 Inj : 1
 Spec. Reported : MS Integration Inj Volume : 3 ul
 Acq. Method : D:\Chem32\1\data\2019\20190419\558\1-POS-3MIN-1.M
 Analysis Method : D:\CHEM32\1\DATA\2019\20190419\558\1-POS-3MIN-1.M
 Catalog No : HY-13650 Batch#40215
 Method Info : Mobile Phase: A: water(0.01%TFA) B:ACN(0.01%TFA)
 Gradient: 5% to 95%B within 1.3 min
 Flow Rate :1.8ml/min
 Column :SunFire C18, 4.6*50mm,3.5um A-RP-314
 Oven Temperature : 45□

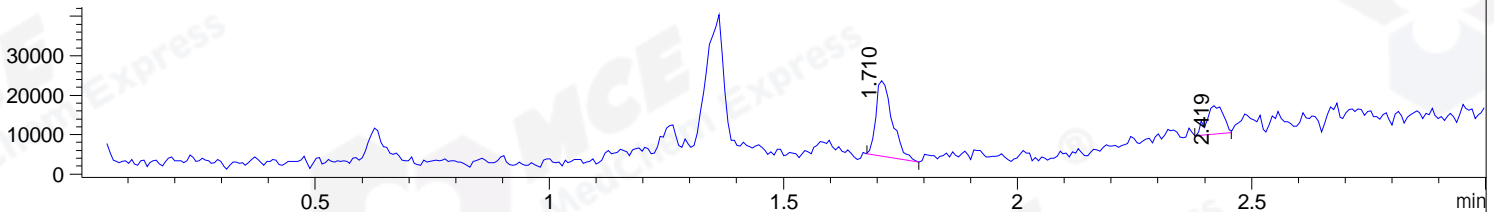
DAD1 B, Sig=214,4 Ref=off



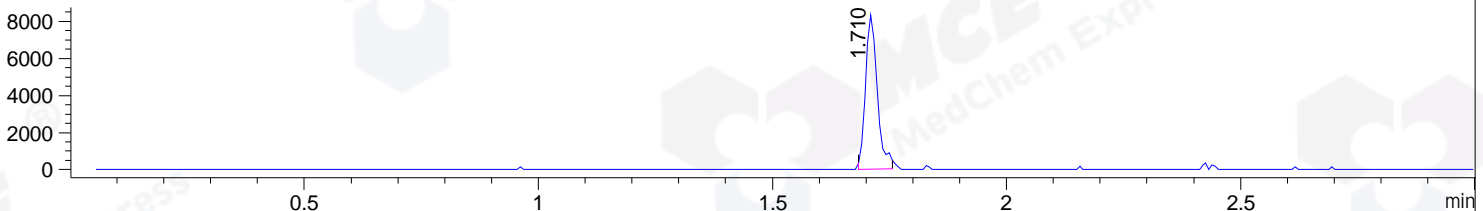
DAD1 C, Sig=254,4 Ref=off



MSD1 TIC, MS File ES-API, Pos, Scan, Frag: 70



Ion 386, MSD1 386, Target Mass 385 +H Positive, EIC=385.7:386.7



Integration Results for DAD1 B, Sig=214,4 Ref=off

RetTim	Width	Area	Height	Area%	MS (+)
1.37	0.01	0.98	1.50	0.08	814
1.40	0.01	1.35	1.51	0.11	ND
1.45	0.02	5.41	4.71	0.43	ND
1.47	0.01	3.71	4.32	0.30	ND
1.70	0.02	1236.81	1000.69	98.92	386
2.36	0.03	2.03	1.28	0.16	142

Integration Results for DAD1 C, Sig=254,4 Ref=off

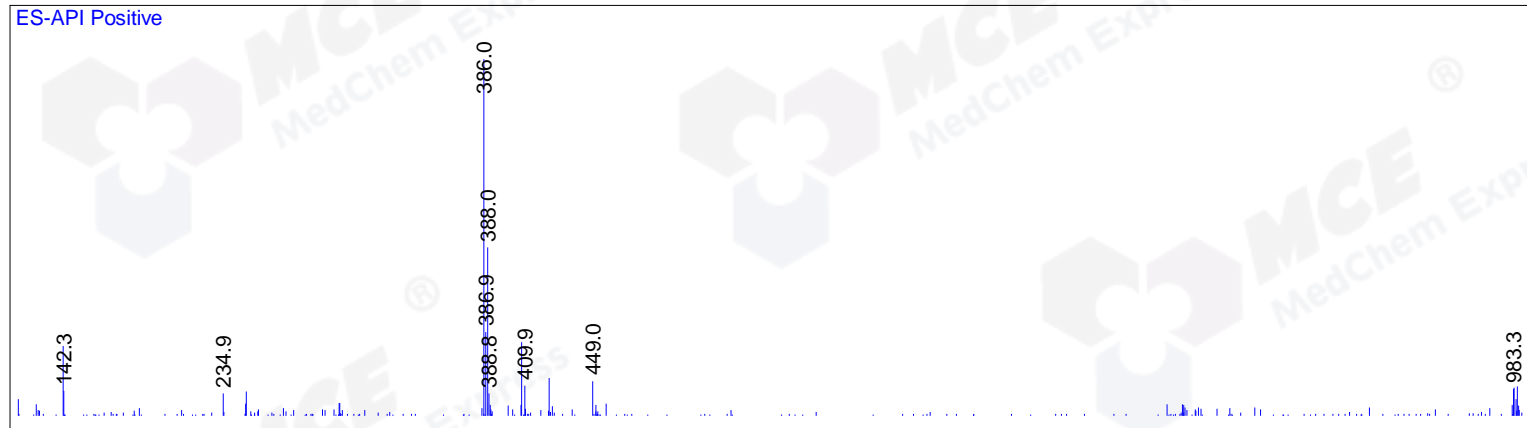
RetTim	Width	Area	Height	Area%	MS (+)
1.37	0.03	1.24	0.76	0.51	ND
1.47	0.02	1.65	1.29	0.68	ND
1.70	0.02	236.59	199.64	98.28	386
2.07	0.01	0.41	0.46	0.17	142
2.36	0.03	0.85	0.53	0.35	142

Integration Results for MSD1 TIC, MS File

1.71	0.04	47045.68	19108.47	72.41	386
2.42	0.03	17929.48	7236.44	27.59	142

RetTim	Width	Area	Height	Area%	MS (+)
--------	-------	------	--------	-------	--------

Ret. Time: 1.71 <<<< POSITIVE SPECTRA >>>>



Ret. Time: 2.42

