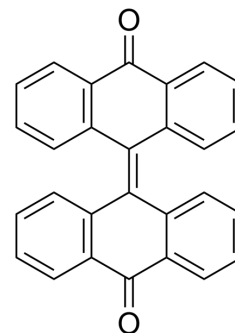


## Bianthrone

Cat. No.:	HY-136504
CAS No.:	434-85-5
Molecular Formula:	C <sub>28</sub> H <sub>16</sub> O <sub>2</sub>
Molecular Weight:	384.43
Target:	Others
Pathway:	Others
Storage:	Please store the product under the recommended conditions in the Certificate of Analysis.



### SOLVENT & SOLUBILITY

In Vitro	DMSO : < 1 mg/mL (ultrasonic;warming;adjust pH to 9 with NaOH;heat to 60°C) (insoluble or slightly soluble)
----------	---

### BIOLOGICAL ACTIVITY

Description	Bianthrone (Dianthrone) is a natural product that can be isolated from <i>Rheum officinale</i> Baill. Bianthrone is a potential toxic marker of <i>Polygonum multiflorum</i> Thunb <sup>[1]</sup> .
-------------	---

### REFERENCES

[1]. Yang JB, et al. UHPLC-QQQ-MS/MS assay for the quantification of dianthrone as potential toxic markers of *Polygonum multiflorum* Thunb: applications for the standardization of traditional Chinese medicines (TCMs) with endogenous toxicity. *Chin Med.* 2021 Jul 3;16(1):51.

**Caution: Product has not been fully validated for medical applications. For research use only.**

Tel: 609-228-6898

Fax: 609-228-5909

E-mail: tech@MedChemExpress.com

Address: 1 Deer Park Dr, Suite Q, Monmouth Junction, NJ 08852, USA