

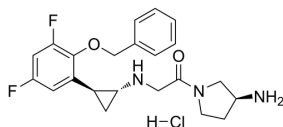
S2116

Cat. No.: HY-136522
 CAS No.: 2262489-89-2
 Batch No.: 247324
 Chemical Name: Ethanone, 1-[(3S)-3-amino-1-pyrrolidinyl]-2-[[[(1R,2S)-2-[3,5-difluoro-2-(phenylmethoxy)phenyl]cyclopropyl]amino]-, hydrochloride (1:1)

PHYSICAL AND CHEMICAL PROPERTIES

Molecular Formula: $C_{22}H_{26}ClF_2N_3O_2$
 Molecular Weight: 437.91
 Storage: 4°C, sealed storage, away from moisture
 * In solvent : -80°C, 6 months; -20°C, 1 month (sealed storage, away from moisture)

Chemical Structure:



ANALYTICAL DATA

Appearance: Off-white to light yellow (Solid)
 1H NMR Spectrum: Consistent with structure
 Purity (HPLC): 98.15%
 Conclusion: The product has been tested and complies with the given specifications.

Caution: Product has not been fully validated for medical applications. For research use only.

Tel: 609-228-6898

Fax: 609-228-5909

E-mail: tech@MedChemExpress.com

Address: 1 Deer Park Dr, Suite Q, Monmouth Junction, NJ 08852, USA