

File ..DATA\2020\20200624\1017\BIZ2020-619-WMX6.D Tgt Mass (CHM) :

Injection Date : 24 Jun 20 10:40 am +0800 Seq. Line : 24

Sample Name : BIZ2020-619-WMX6 Location : PL-A-07

Acq. Operator : ZJ_1432 Inj : 1

Spec. Reported : MS Integration Inj Volume : 0.5 ul

Acq. Method : D:\Chem32\1\data\2020\20200624\1017\1-POS-3MIN.M

Analysis Method : D:\CHEM32\1\DATA\2020\20200624\1017\1-POS-3MIN.M

Catalog No : 1200720

Method Info : Mobile Phase: A: water(0.01%TFA) B:ACN(0.01%TFA)

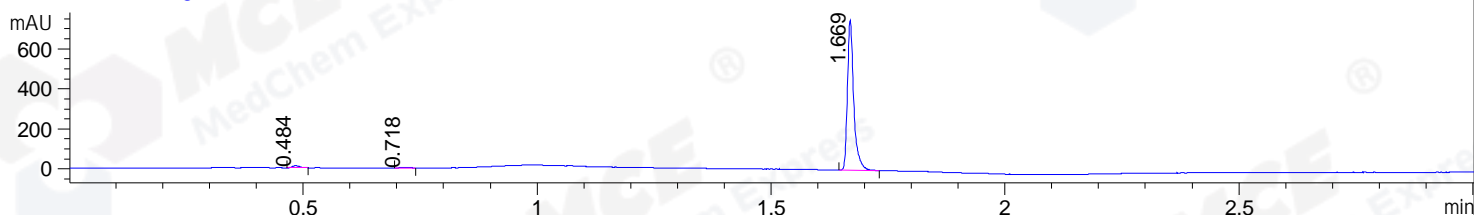
Gradient: 5% to 95%B within 1.3 min

Flow Rate :1.8ml/min

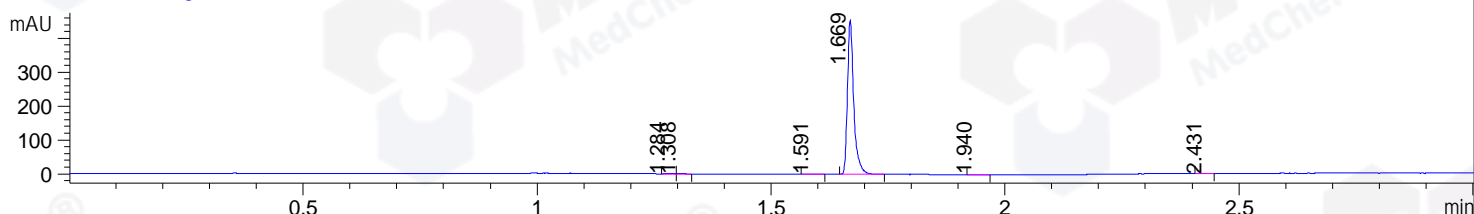
Column :SunFire C18, 4.6*50mm,3.5um A-RP-607

Oven Temperature : 45□

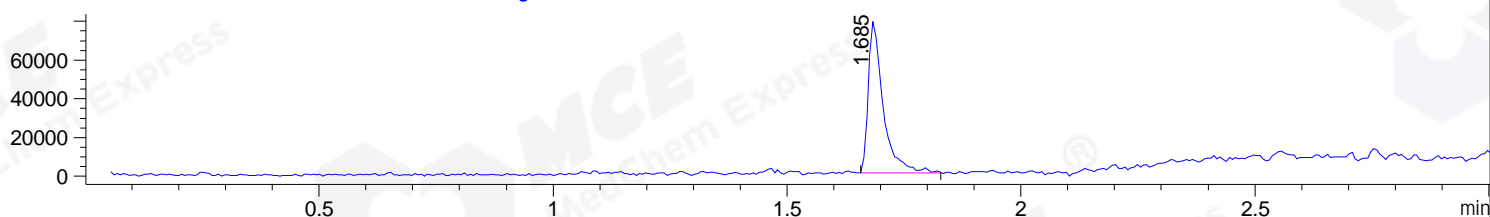
DAD1 B, Sig=214,4 Ref=off



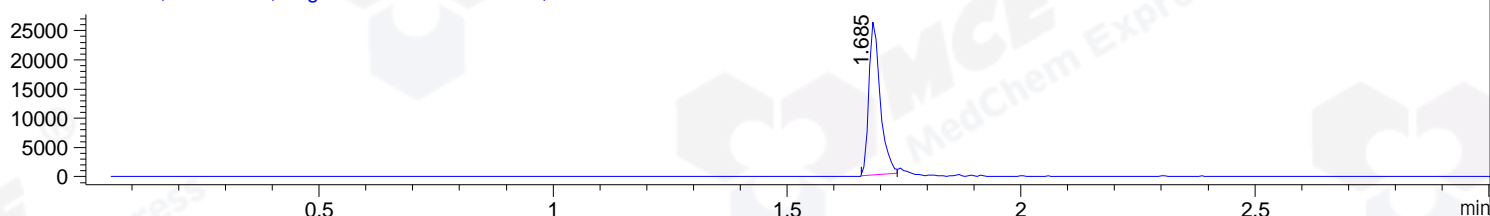
DAD1 C, Sig=254,4 Ref=off



MSD1 TIC, MS File ES-API, Pos, Scan, Frag: 70



Ion 420, MSD1 420, Target Mass 419 +H Positive, EIC=419.7:420.7



Integration Results for DAD1 B, Sig=214,4 Ref=off

RetTim	Width	Area	Height	Area%	MS (+)
0.48	0.02	9.67	10.27	1.35	ND
0.72	0.02	4.01	3.54	0.56	ND
1.67	0.02	702.80	750.85	98.09	420

Integration Results for DAD1 C, Sig=254,4 Ref=off

RetTim	Width	Area	Height	Area%	MS (+)
1.28	0.02	1.42	1.24	0.33	ND
1.31	0.02	0.94	0.90	0.22	ND
1.59	0.02	1.05	0.79	0.24	ND
1.67	0.02	425.00	454.69	98.91	420
1.94	0.02	0.75	0.64	0.18	ND
2.43	0.02	0.53	0.54	0.12	ND

Integration Results for MSD1 TIC, MS File

RetTim	Width	Area	Height	Area%	MS (+)
--------	-------	------	--------	-------	--------

1.68

0.03

175083.97

78594.35

100.00

420

Ret. Time: 1.68

<<<< POSITIVE SPECTRA >>>>

ES-API Positive

