

## Z-Ala-Ala-Asn-AMC

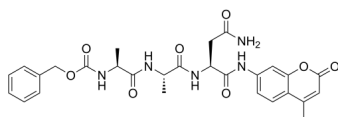
---

Cat. No.: HY-136626  
Batch No.: 155461  
CAS No.: 149697-16-5  
Molecular Formula: C<sub>28</sub>H<sub>31</sub>N<sub>5</sub>O<sub>8</sub>

### ANALYTICAL DATA

Theoretical: C(-), H(-), N(-), Peptide Content(≥60.0%)  
Result: C(58.12%), H(5.99%), N(11.87%), Peptide Content(95.90%)

Chemical Structure:



**Caution: Product has not been fully validated for medical applications. For research use only.**

Tel: 609-228-6898

Fax: 609-228-5909

E-mail: [tech@MedChemExpress.com](mailto:tech@MedChemExpress.com)

Address: 1 Deer Park Dr, Suite Q, Monmouth Junction, NJ 08852, USA