

File ..7 2020-02-27 08-23-36\CPK2020-226-15332_0.D Tgt Mass (CHM):

Injection Date : 27 Feb 20 12:33 pm +0800 Seq. Line : 55

Sample Name : CPK2020-226-15332_0 Location : P2-F-05

Acq. Operator : SYSTEM Inj : 1

Spec. Reported : MS Integration Inj Volume : 0.2 ul

Acq. Method : D:\LCMS03\Data\20200227\20200227 2020-02-27 08-23-36\1-POS-UPLC2.0MIN(0.8ML)
Analysis Method : D:\LCMS03\Data\20200227\20200227 2020-02-27 08-23-36\1-POS-UPLC2.0MIN(0.8ML) .1

Catalog No : HY-13662B Batch# 15332

Method Info : Mobile Phase: A: water(0.01%TFA) B:ACN(0.01%TFA)

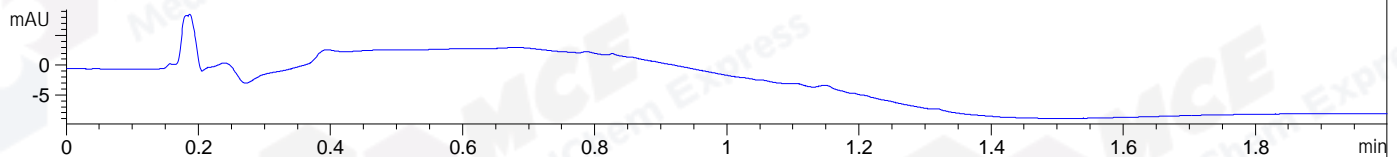
Gradient: 5% to 95%B within 0.6 min

Flow Rate : 0.8ml/min

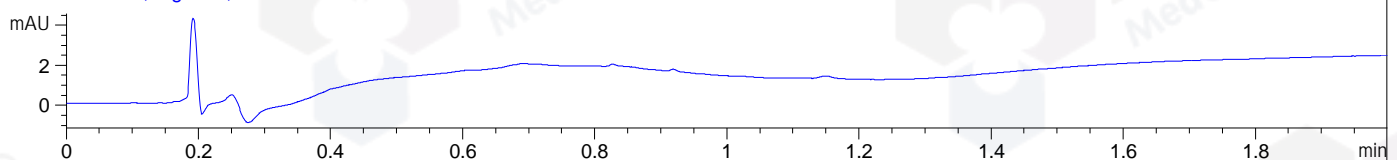
Column : Poroshell 120 EC- C18, 2.1*50mm,1.9um A-RP-463

Oven Temperature : 45C

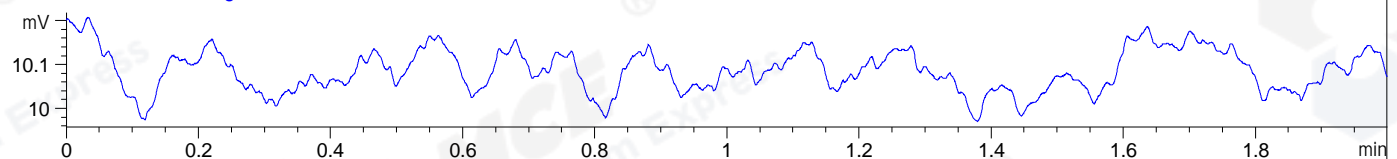
DAD1 A, Sig=214,4 Ref=off



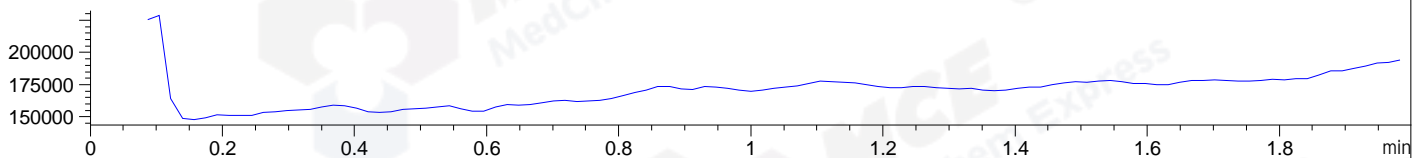
DAD1 B, Sig=254,4 Ref=off



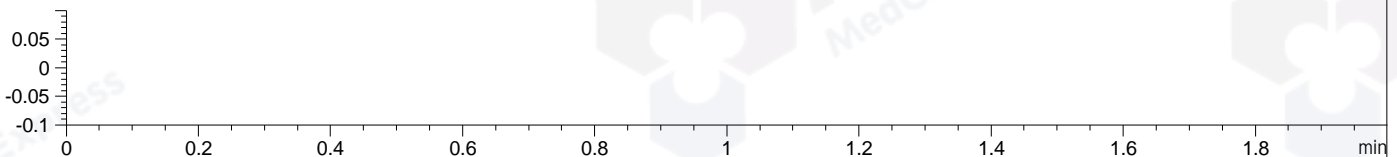
ELS1 A, ELSD Signal



MSD1 TIC, MS File ES-API, Pos, Scan, Frag: 70 **** NO MS PEAKS INTEGRATED ****



Ion 1, MSD1 1, Target Mass 0 +H Positive, EIC=0.7:1.7



Integration Results for DAD1 A, Sig=214,4 Ref=off

RetTim	Width	Area	Height	Area%	MS (+)
-----	-----	-----	-----	-----	-----

Integration Results for DAD1 B, Sig=254,4 Ref=off

RetTim	Width	Area	Height	Area%	MS (+)
-----	-----	-----	-----	-----	-----

Integration Results for ELS1 A, ELSD Signal

RetTim	Width	Area	Height	Area%	MS (+)
-----	-----	-----	-----	-----	-----

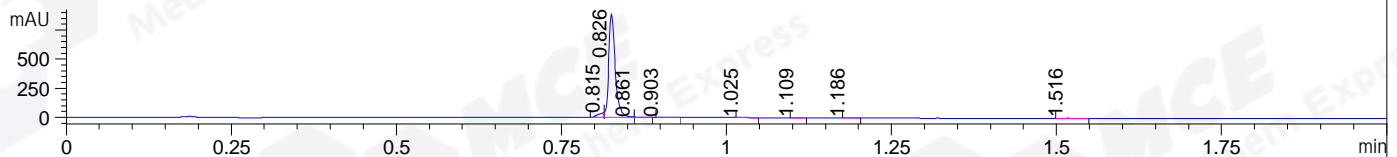
Integration Results for MSD1 TIC, MS File

RetTim	Width	Area	Height	Area%	MS (+)
-----	-----	-----	-----	-----	-----

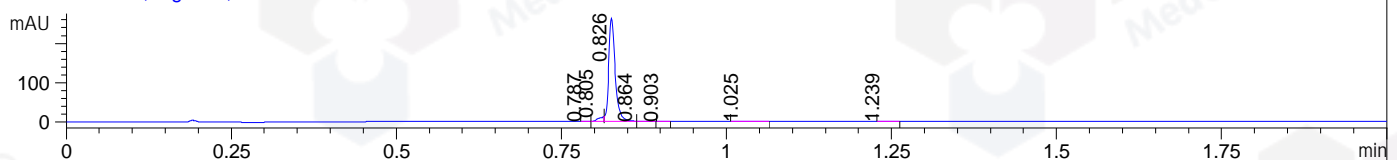
*** End of Report ***

File ..227 2020-02-27 08-23-36\CPK2020-226-15332.D Tgt Mass (CHM):
 Injection Date : 27 Feb 20 12:37 pm +0800 Seq. Line : 56
 Sample Name : CPK2020-226-15332 Location : P2-F-06
 Acq. Operator : SYSTEM Inj : 1
 Spec. Reported : MS Integration Inj Volume : 0.2 ul
 Acq. Method : D:\LCMS03\Data\20200227\20200227 2020-02-27 08-23-36\1-POS-UPLC2.0MIN(0.8ML)
 Analysis Method : D:\LCMS03\Data\20200227\20200227 2020-02-27 08-23-36\1-POS-UPLC2.0MIN(0.8ML) .1
 Catalog No : HY-13662B Batch# 15332
 Method Info : Mobile Phase: A: water(0.01%TFA) B:ACN(0.01%TFA)
 Gradient: 5% to 95%B within 0.6 min
 Flow Rate :0.8ml/min
 Column :Poroshell 120 EC- C18, 2.1*50mm,1.9um A-RP-463
 Oven Temperature : 45C

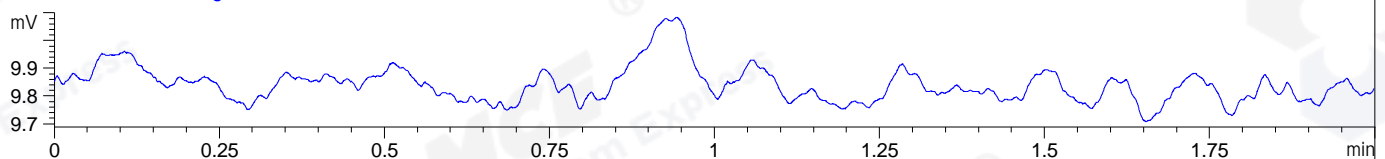
DAD1 A, Sig=214,4 Ref=off



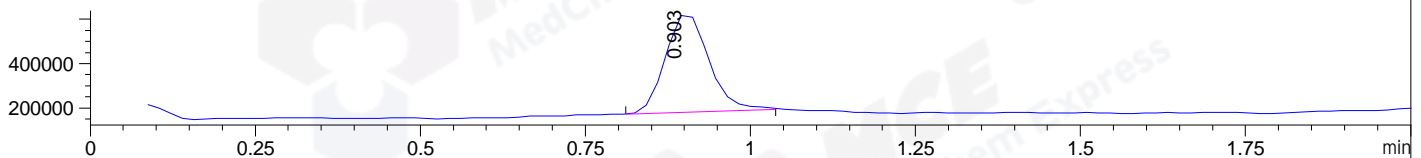
DAD1 B, Sig=254,4 Ref=off



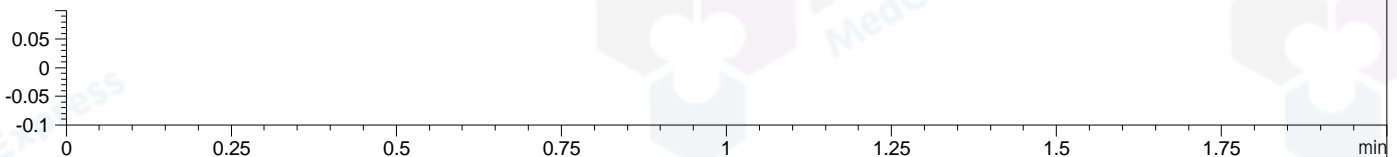
ELS1 A, ELSD Signal



MSD1 TIC, MS File ES-API, Pos, Scan, Frag: 70



Ion 1, MSD1 1, Target Mass 0 +H Positive, EIC=0.7:1.7



Integration Results for DAD1 A, Sig=214,4 Ref=off

RetTim	Width	Area	Height	Area%	MS (+)
0.81	0.01	25.39	41.14	4.05	114
0.83	0.01	595.87	884.31	95.04	114
0.86	0.01	1.27	1.90	0.20	370
0.90	0.01	1.10	1.86	0.17	370
1.02	0.01	0.52	0.65	0.08	114
1.11	0.01	0.37	0.47	0.06	114
1.19	0.01	0.89	1.36	0.14	114
1.52	0.01	1.57	1.99	0.25	114

Integration Results for DAD1 B, Sig=254,4 Ref=off

RetTim	Width	Area	Height	Area%	MS (+)
0.79	0.01	0.10	0.17	0.05	114
0.80	0.01	7.31	11.53	3.94	114
0.83	0.01	176.85	263.37	95.32	114
0.86	0.01	0.35	0.51	0.19	370
0.90	0.01	0.30	0.57	0.16	370
1.02	0.01	0.33	0.32	0.18	114

1.24 0.01 0.30 0.44 0.16 114

Integration Results for ELS1 A, ELSD Signal

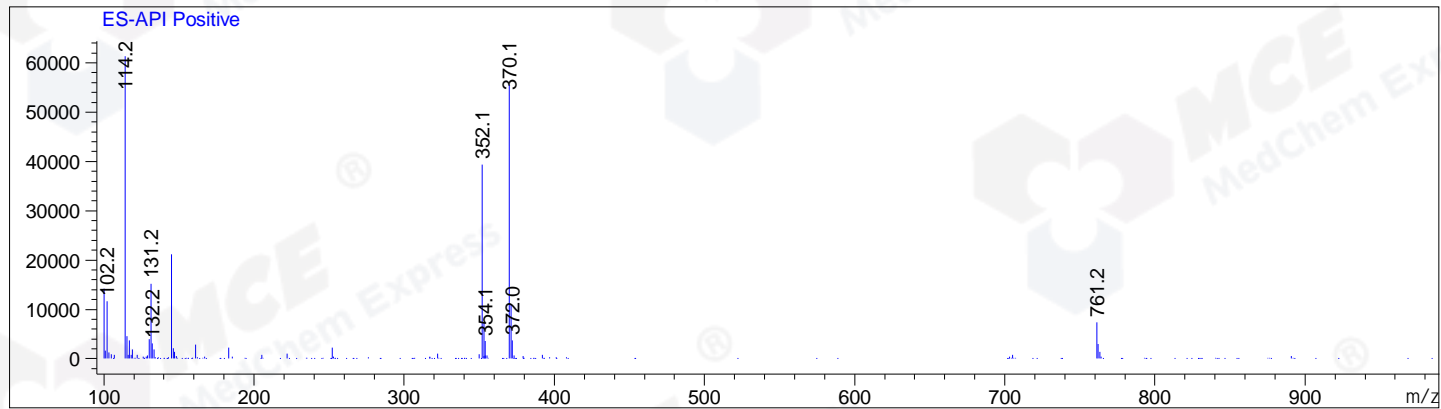
RetTim	Width	Area	Height	Area%	MS (+)
--------	-------	------	--------	-------	--------

Integration Results for MSD1 TIC, MS File

RetTim	Width	Area	Height	Area%	MS (+)
0.90	0.07	2028206.25	457493.78	100.00	114

Ret. Time: 0.90

<<<< POSITIVE SPECTRA >>>>



*** End of Report ***