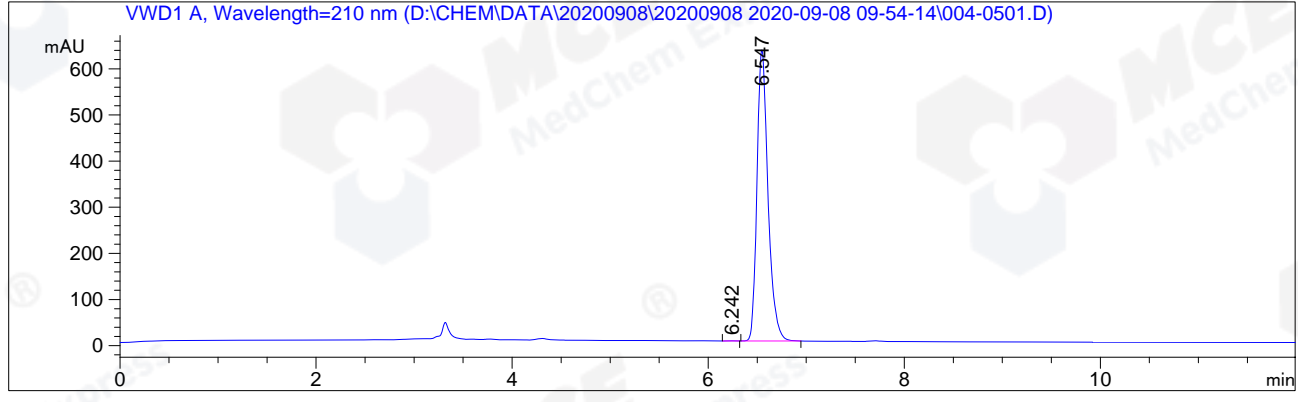


```
=====
Acq. Operator   : cxw                               Seq. Line :    5
Acq. Instrument : HPLC-04                           Location  : Vial 4
Injection Date  : 9/8/2020 3:40:27 PM                Inj       :    1
                                                Inj Volume: 5.0 µl
Different Inj Volume from Sequence !      Actual Inj Volume : 3.0 µl
Acq. Method     : D:\CHEM\DATA\20200908\20200908 2020-09-08 09-54-14\HM-787_2-H01EE02 (NP-
                  HPLC),C2,210NM.M
Last changed    : 9/8/2020 3:09:58 PM by cxw
Analysis Method : D:\CHEM\METHODS\HM-787_2-H01EE02 (NP-HPLC),C2,210NM.M
Last changed    : 9/8/2020 3:59:45 PM by cxw
                  (modified after loading)
CAS NO.        : 1927857-98-4
                  C--NP-38
=====
```

Additional Info : Peak(s) manually integrated



=====  
Area Percent Report  
=====

```
Sorted By      : Signal
Calib. Data Modified : 9/3/2020 10:16:27 AM
Multiplier:    : 1.0000
Dilution:      : 1.0000
Use Multiplier & Dilution Factor with ISTDs
```

Signal 1: VWD1 A, Wavelength=210 nm

Peak #	RetTime [min]	Type	Width [min]	Area mAU*s	Area %	Name
1	4.838		0.0000	0.00000	0.0000	
2	6.242	MM R	0.0820	1.19624	0.0243	?
3	6.547	MM R	0.1299	4915.66797	99.9757	?
4	7.454		0.0000	0.00000	0.0000	

Totals : 4916.86421

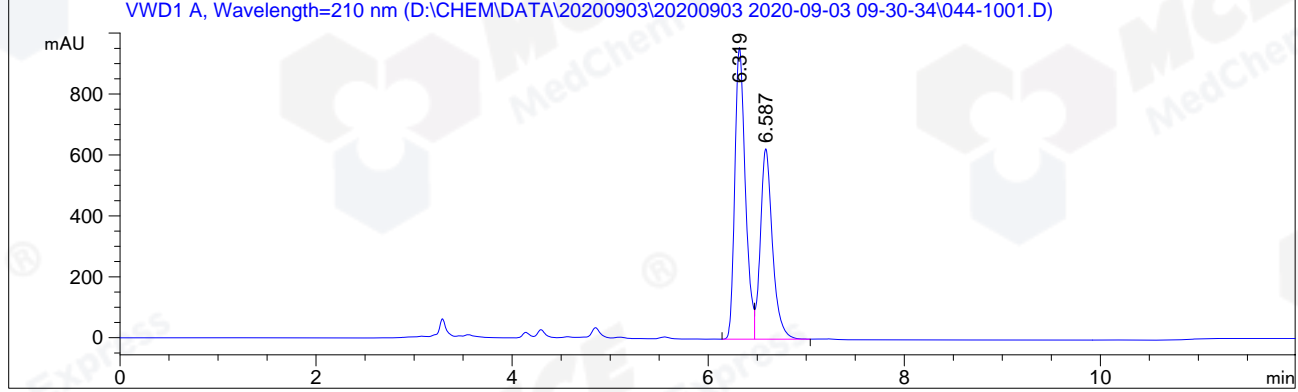
2 Warnings or Errors :

```
Warning : Calibration warnings (see calibration table listing)
Warning : Calibrated compound(s) not found
```

=====  
\*\*\* End of Report \*\*\*

```
=====
Acq. Operator   : cxw                      Seq. Line : 10
Acq. Instrument : HPLC-04                  Location  : Vial 44
Injection Date  : 9/3/2020 12:34:18 PM     Inj       : 1
                                                Inj Volume: 5.0 µl
Different Inj Volume from Sequence !       Actual Inj Volume : 4.0 µl
Acq. Method    : D:\CHEM\DATA\20200903\20200903 2020-09-03 09-30-34\HM-787_2-H01EE02 (NP-
              : HPLC),C1,210NM.M
Last changed   : 9/3/2020 12:43:23 PM by cxw
              : (modified after loading)
Analysis Method : D:\CHEM\METHODS\HM-787_2-H01EE02 (NP-HPLC),C1,210NM.M
Last changed   : 9/3/2020 1:18:52 PM by cxw
              : (modified after loading)
CAS NO.        : 1927857-98-4
              : C-NP-38
=====
```

Additional Info : Peak(s) manually integrated



Area Percent Report

```
Sorted By      : Signal
Calib. Data Modified : 9/3/2020 10:16:27 AM
Multiplier:    : 1.0000
Dilution:      : 1.0000
Use Multiplier & Dilution Factor with ISTDs
```

Signal 1: VWD1 A, Wavelength=210 nm

Peak #	RetTime [min]	Type	Width [min]	Area mAU	Area %	Name
1	4.838		0.0000	0.00000	0.0000	
2	6.319	BV	0.1149	7158.26953	57.1773	?
3	6.587	VB	0.1292	5361.15039	42.8227	?
4	7.454		0.0000	0.00000	0.0000	

Totals : 1.25194e4

2 Warnings or Errors :

```
Warning : Calibration warnings (see calibration table listing)
Warning : Calibrated compound(s) not found
```

\*\*\* End of Report \*\*\*