

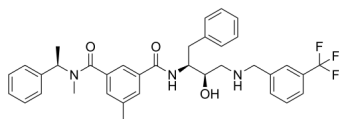
BACE2-IN-1

Cat. No.: HY-136742
Batch No.: 281503
CAS No.: 1676107-08-6
Molecular Formula: C₃₆H₃₈F₃N₃O₃

ANALYTICAL DATA

Theoretical: C(69.80%)、H(6.22%)、N(6.78%)
Result: C(69.46%)、H(5.74%)、N(6.72%)

Chemical Structure:



Caution: Product has not been fully validated for medical applications. For research use only.

Tel: 609-228-6898

Fax: 609-228-5909

E-mail: tech@MedChemExpress.com

Address: 1 Deer Park Dr, Suite Q, Monmouth Junction, NJ 08852, USA