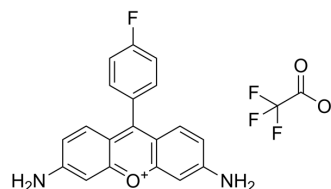


## Kyoto probe 1

Cat. No.:	HY-136870
CAS No.:	2088021-81-0
Molecular Formula:	C <sub>21</sub> H <sub>14</sub> F <sub>4</sub> N <sub>2</sub> O <sub>3</sub>
Molecular Weight:	418.34
Target:	Fluorescent Dye
Pathway:	Others
Storage:	Please store the product under the recommended conditions in the Certificate of Analysis.



### BIOLOGICAL ACTIVITY

#### Description

Kyoto probe 1 is a hiPSCs fluorescent probe. Kyoto probe 1 rapidly distinguishes between human ES/iPS (hES/hiPS) cells and differentiated cells. Kyoto probe 1 is primarily explained by the distinct expression patterns of ATP-binding cassette (ABC) transporters by hiPS cells and differentiated cells<sup>[1][2]</sup>.

### REFERENCES

- [1]. ZhiCheng ShangShan, et al. Compounds for removing human pluripotent stem cells. JPWO2018043567A1.
- [2]. Miyagi-Shiohira C, et al. Kyoto probe-1 reveals phenotypic differences between mouse ES cells and iTS-P cells. Sci Rep. 2020 Oct 22;10(1):18084.

**Caution: Product has not been fully validated for medical applications. For research use only.**

Tel: 609-228-6898

Fax: 609-228-5909

E-mail: tech@MedChemExpress.com

Address: 1 Deer Park Dr, Suite Q, Monmouth Junction, NJ 08852, USA