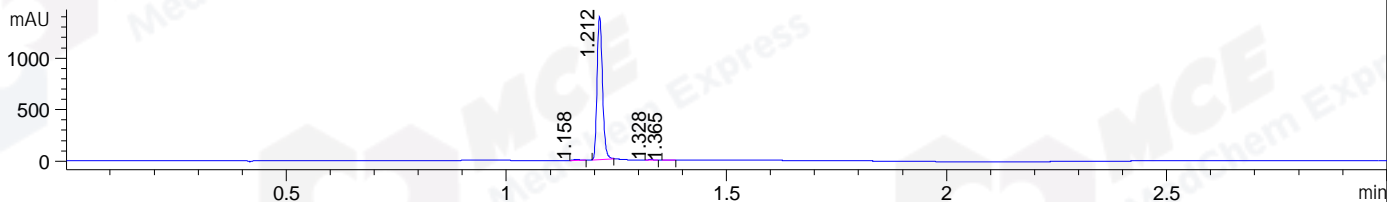
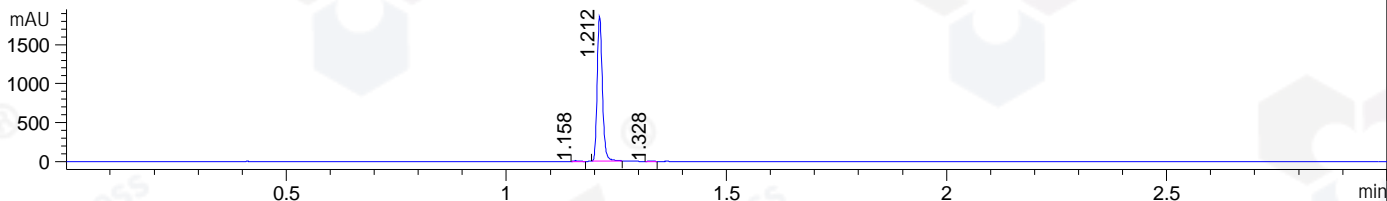


File ..\DATA\2020\20201029\1140\BIZ2020-O28-SCH4.D Tgt Mass (CHM):
 Injection Date : 29 Oct 20 6:57 pm +0800 Seq. Line : 120
 Sample Name : BIZ2020-O28-SCH4 Location : P1-C-04
 Acq. Operator : zyj_1547 Inj : 1
 Spec. Reported : MS Integration Inj Volume : 1 ul
 Acq. Method : D:\Chem32\1\data\2020\20201029\1140\1-POS-3MIN.M
 Analysis Method : D:\CHEM32\1\DATA\2020\20201029\1140\1-POS-3MIN.M
 CAS NO. : 945396-55-4
 Method Info : Mobile Phase: A: water(0.01%TFA) B:ACN(0.01%TFA)
 Gradient: 5% to 95%B within 1.3 min
 Flow Rate :1.8ml/min
 Column :SunFire C18, 4.6*50mm,3.5um A-RP-698

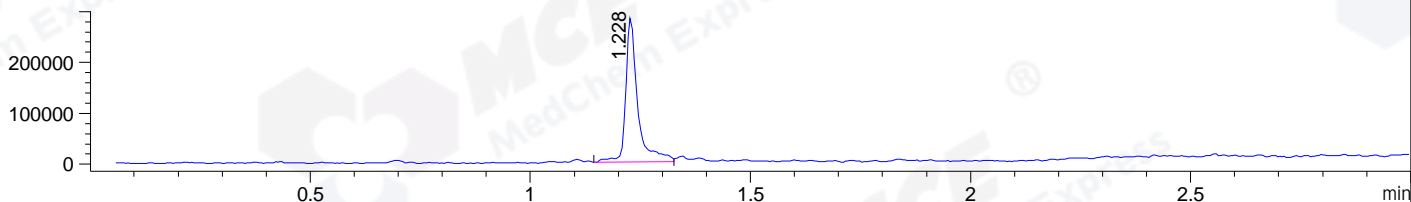
DAD1 B, Sig=214,4 Ref=off



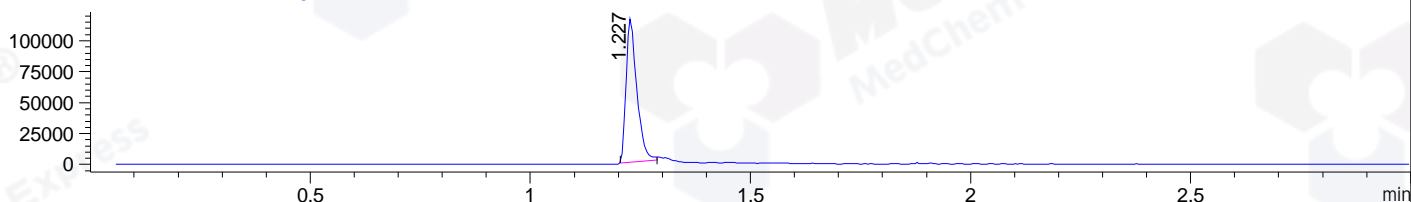
DAD1 C, Sig=254,4 Ref=off



MSD1 TIC, MS File ES-API, Pos, Scan, Frag: 70



Ion 487, MSD1 487, Target Mass 486 +H Positive, EIC=486.7:487.7



Integration Results for DAD1 B, Sig=214,4 Ref=off

RetTim	Width	Area	Height	Area%	MS (+)
1.16	0.02	10.25	10.22	0.84	473
1.21	0.01	1196.49	1388.73	98.44	487
1.33	0.01	5.62	7.44	0.46	487
1.37	0.01	3.03	3.81	0.25	487

Integration Results for DAD1 C, Sig=254,4 Ref=off

RetTim	Width	Area	Height	Area%	MS (+)
1.16	0.01	8.34	9.84	0.53	473
1.21	0.01	1545.39	1859.40	99.14	487
1.33	0.01	5.13	6.85	0.33	487

Integration Results for MSD1 TIC, MS File

RetTim	Width	Area	Height	Area%	MS (+)
1.23	0.03	542338.63	283526.19	100.00	487

Ret. Time: 1.23

<<<< POSITIVE SPECTRA >>>>

ES-API Positive

