

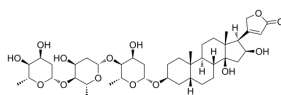
Gitoxin

Cat. No.: HY-136933
 CAS No.: 4562-36-1
 Batch No.: 342288
 Chemical Name: Card-20(22)-enolide, 3-[(O-2,6-dideoxy-β-D-ribo-hexopyranosyl-(1→4)-O-2,6-dideoxy-β-D-ribo-hexopyranosyl-(1→4)-2,6-dideoxy-β-D-ribo-hexopyranosyl)oxy]-14,16-dihydroxy-, (3β,5β,16β)-

PHYSICAL AND CHEMICAL PROPERTIES

Molecular Formula: C₄₁H₆₄O₁₄
 Molecular Weight: 780.94
 Storage: Powder -20°C 3 years
 4°C 2 years
 In solvent -80°C 6 months
 -20°C 1 month

Chemical Structure:



ANALYTICAL DATA

Appearance: White to off-white (Solid)
 Purity: ≥95.0%
 Conclusion: The product has been tested and complies with the given specifications.

Caution: Product has not been fully validated for medical applications. For research use only.

Tel: 609-228-6898

Fax: 609-228-5909

E-mail: tech@MedChemExpress.com

Address: 1 Deer Park Dr, Suite Q, Monmouth Junction, NJ 08852, USA