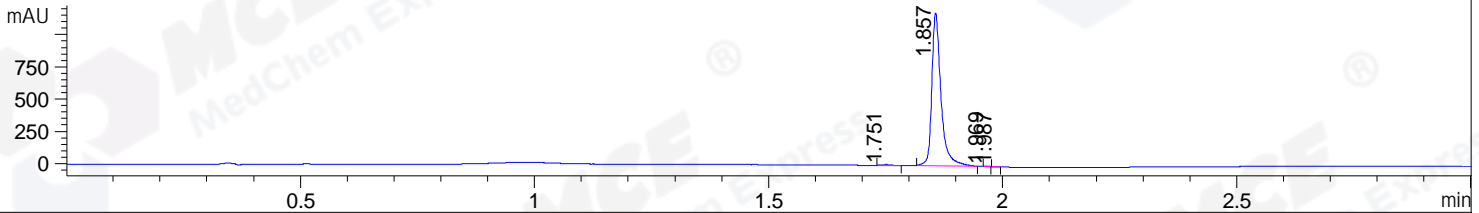
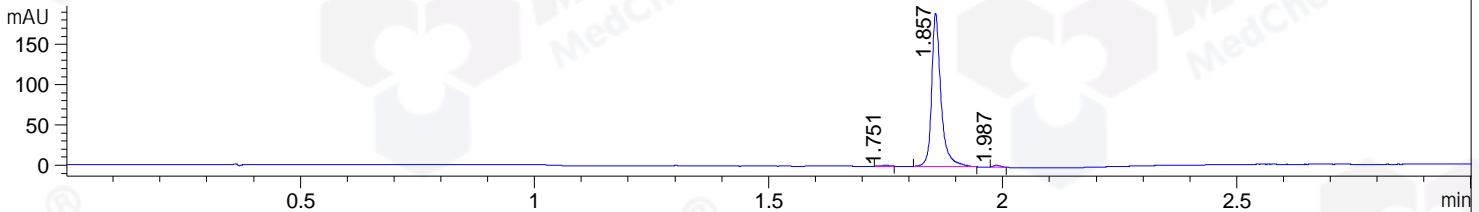


File ..\DATA\2019\20190313\556\BIZ2019-312-WYQ10.D Tgt Mass (CHM):  
 Injection Date : 13 Mar 19 11:31 am +0800 Seq. Line : 29  
 Sample Name : BIZ2019-312-WYQ10 Location : P2-F-09  
 Acq. Operator : LQ\_1052 Inj : 1  
 Spec. Reported : MS Integration Inj Volume : 1 ul  
 Acq. Method : D:\Chem32\1\data\2019\20190313\556\1-POS-3MIN-1.M  
 Analysis Method : D:\CHEM32\1\DATA\2019\20190313\556\1-POS-3MIN-1.M  
 Catalog No : HY-13706 Batch#38912  
 Method Info : Mobile Phase: A: water(0.01%TFA) B:ACN(0.01%TFA)  
 Gradient: 5% to 95%B within 1.3 min  
 Flow Rate :1.8ml/min  
 Column :SunFire C18, 4.6\*50mm,3.5um A-RP-314  
 Oven Temperature : 45

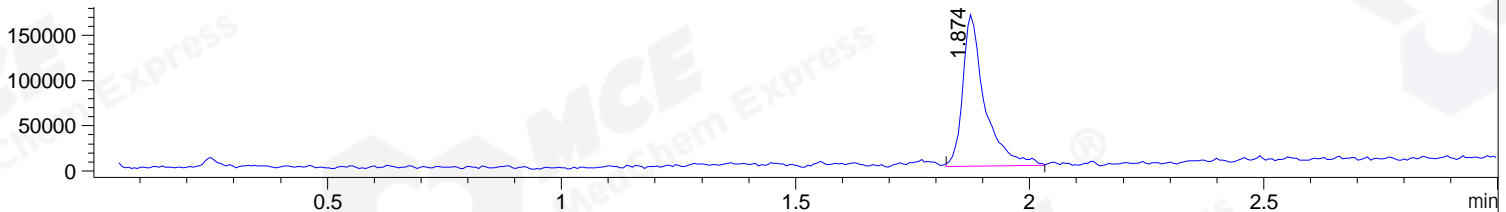
DAD1 B, Sig=214,4 Ref=off



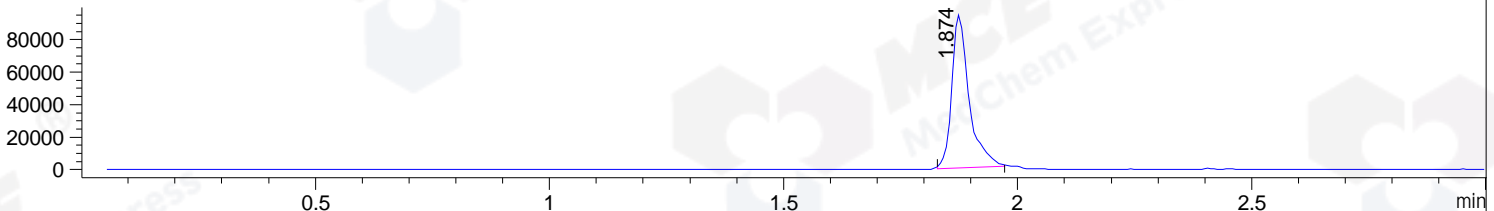
DAD1 C, Sig=254,4 Ref=off



MSD1 TIC, MS File ES-API, Pos, Scan, Frag: 70



Ion 417.1, MSD1 417.1, Target Mass 416.1 +H Positive, EIC=416.8:417.8



Integration Results for DAD1 B, Sig=214,4 Ref=off

RetTim	Width	Area	Height	Area%	MS (+)
1.75	0.02	9.17	7.09	0.56	ND
1.86	0.02	1621.09	1186.28	99.35	417
1.97	0.01	0.52	0.72	0.03	417
1.99	0.01	0.90	1.14	0.06	439

Integration Results for DAD1 C, Sig=254,4 Ref=off

RetTim	Width	Area	Height	Area%	MS (+)
1.75	0.02	1.55	1.21	0.58	ND
1.86	0.02	263.24	190.24	98.57	417
1.99	0.02	2.28	2.14	0.85	439

Integration Results for MSD1 TIC, MS File

RetTim	Width	Area	Height	Area%	MS (+)
1.87	0.05	550571.06	167968.27	100.00	417

Ret. Time: 1.87

<<<< POSITIVE SPECTRA >>>>

ES-API Positive

