

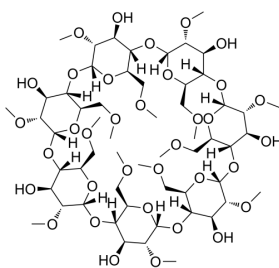
## DM-β-CD

Cat. No.:	HY-137234
CAS No.:	51166-71-3
Batch No.:	288235
Chemical Name:	β-Cyclodextrin, 2A,2B,2C,2D,2E,2F,2G,6A,6B,6C,6D,6E,6F,6G-tetradeca-O-methyl-

### PHYSICAL AND CHEMICAL PROPERTIES

Molecular Formula:	C <sub>56</sub> H <sub>98</sub> O <sub>35</sub>		
Molecular Weight:	1331.36		
Storage:	Powder	-20°C	3 years
		4°C	2 years
	In solvent	-80°C	6 months
		-20°C	1 month

#### Chemical Structure:



### ANALYTICAL DATA

Appearance:	White to off-white (Solid)
Assay:	99.9%
Specific rotation:	164°
Water solution pH:	6.1
Clarity experiment:	QuConform
Light-absorbing impurities:	Conform
Average degree of substitution:	12.5
Loss on Drying:	3.1%
Beta cyclodextrin:	0.07%
Residue on Ignition:	0.05%
Sulfate:	<0.2%
Chloride:	<0.2%
The total aerobic microbial count:	<10 cfu/g
The total combined molds and yeasts count:	<10 cfu/g
Escherichia coli:	Not detected
Conclusion:	The product has been tested and complies with the given specifications.

---

**Caution: Product has not been fully validated for medical applications. For research use only.**

Tel: 609-228-6898

Fax: 609-228-5909

E-mail: [tech@MedChemExpress.com](mailto:tech@MedChemExpress.com)

Address: 1 Deer Park Dr, Suite Q, Monmouth Junction, NJ 08852, USA