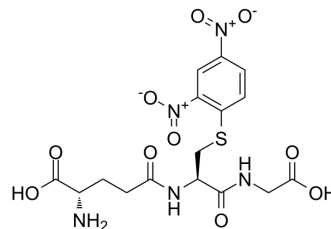


S-(2,4-Dinitrophenyl)glutathione

Cat. No.:	HY-137330
CAS No.:	26289-39-4
Molecular Formula:	C ₁₆ H ₁₉ N ₅ O ₁₀ S
Molecular Weight:	473.41
Target:	Endogenous Metabolite
Pathway:	Metabolic Enzyme/Protease
Storage:	Please store the product under the recommended conditions in the Certificate of Analysis.



BIOLOGICAL ACTIVITY

Description	S-(2,4-Dinitrophenyl)glutathione is a substrate for glutathione-S-transferase. (2,4-Dinitrophenyl)glutathione can be used as an irreversible glutathione reductase inhibitor with an K_i value of 30 μ M ^{[1][2]} .
IC ₅₀ & Target	K_i : 30 μ M(glutathione reductase) ^[2]

REFERENCES

[1]. Yokooji T, et al. Site-specific bidirectional efflux of 2,4-dinitrophenyl-S-glutathione, a substrate of multidrug resistance-associated proteins, in rat intestine and Caco-2 cells. *J Pharm Pharmacol.* 2007 Apr;59(4):513-20.

[2]. Bilzer M, et al. Interaction of a glutathione S-conjugate with glutathione reductase. Kinetic and X-ray crystallographic studies. *Eur J Biochem.* 1984 Jan 16;138(2):373-8.

Caution: Product has not been fully validated for medical applications. For research use only.

Tel: 609-228-6898

Fax: 609-228-5909

E-mail: tech@MedChemExpress.com

Address: 1 Deer Park Dr, Suite Q, Monmouth Junction, NJ 08852, USA