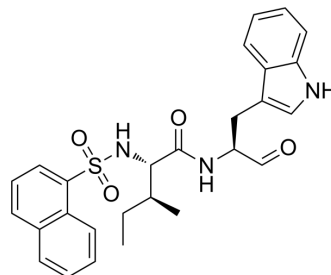


## Cathepsin L-IN-4

Cat. No.:	HY-137392
CAS No.:	161709-56-4
Molecular Formula:	C <sub>27</sub> H <sub>29</sub> N <sub>3</sub> O <sub>4</sub> S
Molecular Weight:	491.6
Sequence:	{1-Naphthalenesulfonyl}-Ile-Trp-CHO
Sequence Shortening:	{1-Naphthalenesulfonyl}-IW-CHO
Target:	Cathepsin
Pathway:	Metabolic Enzyme/Protease
Storage:	Please store the product under the recommended conditions in the Certificate of Analysis.



### BIOLOGICAL ACTIVITY

Description	Cathepsin L-IN-4 is an inhibitor of cathepsin L with IC <sub>50</sub> at nanomolar concentrations <sup>[1]</sup> .
IC <sub>50</sub> & Target	cathepsin L

### REFERENCES

[1]. Dvoryakova E A, et al. Recombinant cathepsin L of *Tribolium castaneum* and its potential in the hydrolysis of immunogenic gliadin peptides [J]. International Journal of Molecular Sciences, 2022, 23(13): 7001.

**Caution: Product has not been fully validated for medical applications. For research use only.**

Tel: 609-228-6898

Fax: 609-228-5909

E-mail: tech@MedChemExpress.com

Address: 1 Deer Park Dr, Suite Q, Monmouth Junction, NJ 08852, USA