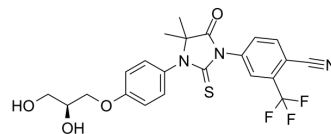


## Rezvilutamide

<b>Cat. No.:</b>	HY-137448
<b>CAS No.:</b>	1572045-62-5
<b>Molecular Formula:</b>	C <sub>22</sub> H <sub>20</sub> F <sub>3</sub> N <sub>3</sub> O <sub>4</sub> S
<b>Molecular Weight:</b>	479.47
<b>Target:</b>	Androgen Receptor
<b>Pathway:</b>	Others
<b>Storage:</b>	Please store the product under the recommended conditions in the Certificate of Analysis.



### SOLVENT & SOLUBILITY

<b>In Vitro</b>	DMSO : 100 mg/mL (208.56 mM; Need ultrasonic)					
	<b>Preparing Stock Solutions</b>	<b>Solvent Concentration</b>	<b>Mass</b>	<b>1 mg</b>	<b>5 mg</b>	<b>10 mg</b>
		<b>1 mM</b>		2.0856 mL	10.4282 mL	20.8564 mL
		<b>5 mM</b>		0.4171 mL	2.0856 mL	4.1713 mL
		<b>10 mM</b>		0.2086 mL	1.0428 mL	2.0856 mL
Please refer to the solubility information to select the appropriate solvent.						
<b>In Vivo</b>	<ol style="list-style-type: none"> <li>Add each solvent one by one: 10% DMSO &gt;&gt; 40% PEG300 &gt;&gt; 5% Tween-80 &gt;&gt; 45% saline Solubility: ≥ 2.5 mg/mL (5.21 mM); Clear solution</li> <li>Add each solvent one by one: 10% DMSO &gt;&gt; 90% (20% SBE-β-CD in saline) Solubility: ≥ 2.5 mg/mL (5.21 mM); Clear solution</li> <li>Add each solvent one by one: 10% DMSO &gt;&gt; 90% corn oil Solubility: ≥ 2.5 mg/mL (5.21 mM); Clear solution</li> </ol>					

### BIOLOGICAL ACTIVITY

<b>Description</b>	Rezvilutamide (SHR3680) is an androgen receptor antagonist. Rezvilutamide (SHR3680) is used for the study of prostate cancer <sup>[1][2]</sup> .
--------------------	--

### REFERENCES

[1]. SangjunYoo, et al. New drugs in prostate cancer. Prostate International Volume 4, Issue 2, June 2016, Pages 37-42.

**Caution: Product has not been fully validated for medical applications. For research use only.**

Tel: 609-228-6898

Fax: 609-228-5909

E-mail: [tech@MedChemExpress.com](mailto:tech@MedChemExpress.com)

Address: 1 Deer Park Dr, Suite Q, Monmouth Junction, NJ 08852, USA