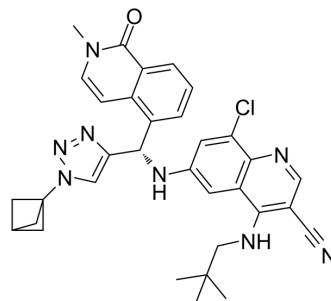


Tilpisertib

Cat. No.:	HY-137456		
CAS No.:	2065153-41-3		
Molecular Formula:	C ₃₃ H ₃₃ ClN ₈ O		
Molecular Weight:	593.12		
Target:	Ser/Thr Protease		
Pathway:	Metabolic Enzyme/Protease		
Storage:	Powder	-20°C	3 years
		4°C	2 years
	In solvent	-80°C	6 months
		-20°C	1 month



SOLVENT & SOLUBILITY

In Vitro

DMSO : 125 mg/mL (210.75 mM; Need ultrasonic)

Concentration	Mass		
	1 mg	5 mg	10 mg
1 mM	1.6860 mL	8.4300 mL	16.8600 mL
5 mM	0.3372 mL	1.6860 mL	3.3720 mL
10 mM	0.1686 mL	0.8430 mL	1.6860 mL

Please refer to the solubility information to select the appropriate solvent.

BIOLOGICAL ACTIVITY

Description

Tilpisertib (GS-4875) is a serine/threonine kinase inhibitor (WO2017007689)^[1].

IC₅₀ & Target

serine/threonine kinase^[1]

In Vitro

Tilpisertib is a serine/threonine kinase inhibitor^[1].
MCE has not independently confirmed the accuracy of these methods. They are for reference only.

REFERENCES

[1]. WO2017007689

Caution: Product has not been fully validated for medical applications. For research use only.

Tel: 609-228-6898

Fax: 609-228-5909

E-mail: tech@MedChemExpress.com

Address: 1 Deer Park Dr, Suite Q, Monmouth Junction, NJ 08852, USA