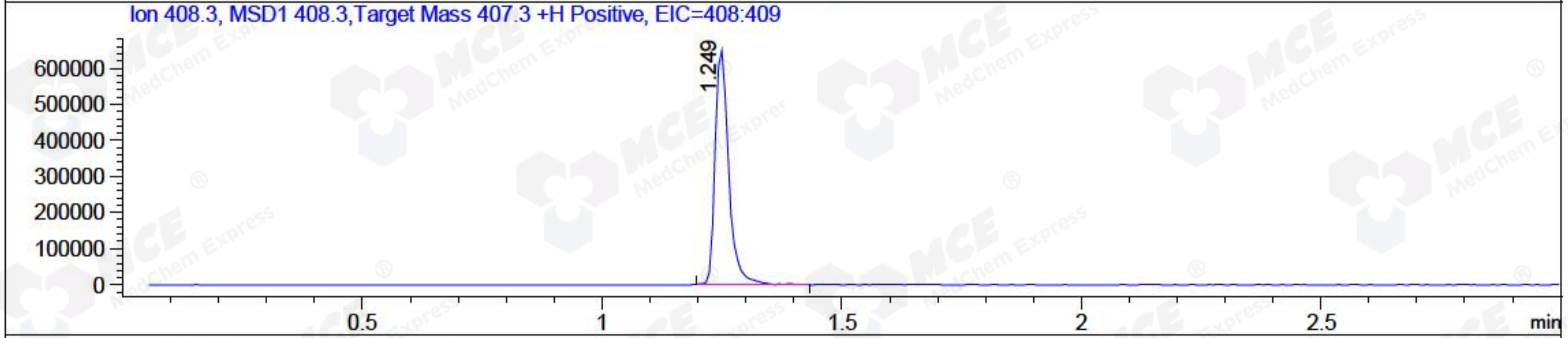
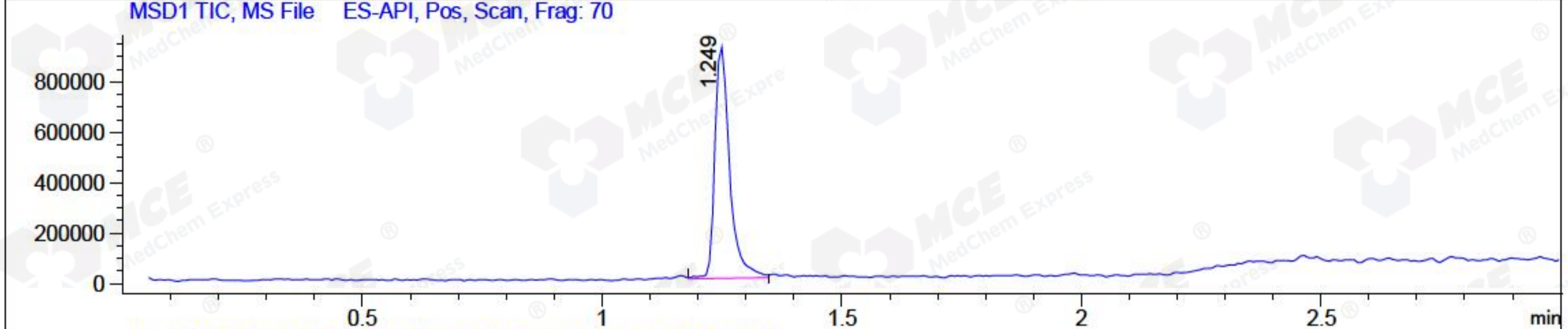
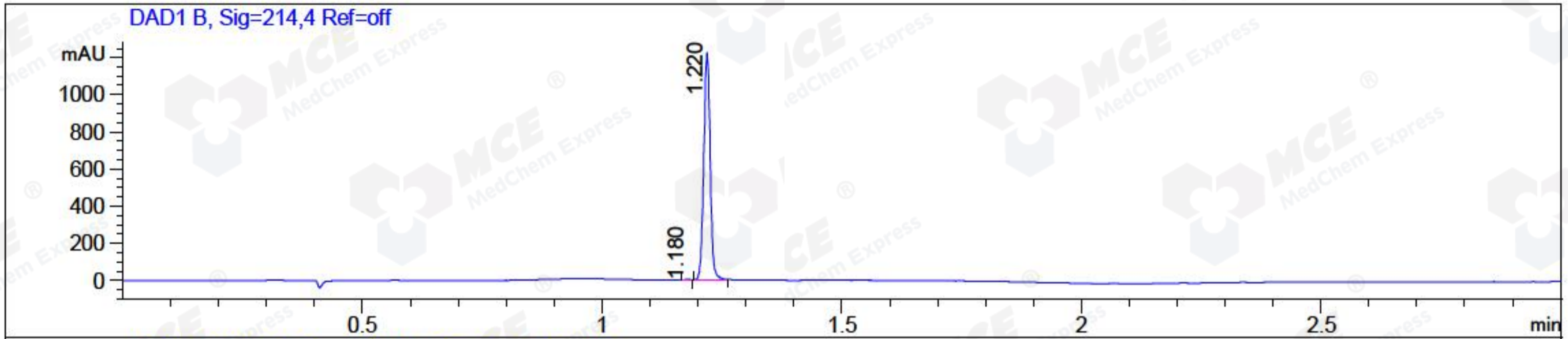


File ..DATA\2018\20180813\357\CPK2018-813 -12715.D Tgt Mass (CHM):
 Injection Date : 13 Aug 18 5:42 pm +0800 Seq. Line : 18
 Sample Name : CPK2018-813-12715 Location : P2-D-03
 Acq. Operator : LQ_1052 Inj : 1
 Spec. Reported : MS Integration Inj Volume : 2 ul
 Acq. Method : D:\Chem32\1\data\2018\20180813\357\1-POS-3MIN-1.M
 Analysis Method : D:\CHEM32\1\DATA\2018\20180813\357\1-POS-3MIN-1.M
 Catalog No : HY-13749 Batch#12715 A-RP-314
 Method Info : Mobile Phase: A: water(0.01%TFA) B:ACN(0.01%TFA)
 Gradient: 5% to 95%B within 1.3 min
 Flow Rate :1.8ml/min
 Column :SunFire C18, 4.6*50mm,3.5um A-RP-314
 Oven Temperature : 45□



Integration Results for DAD1 B, Sig=214,4 Ref=off

RetTim	Width	Area	Height	Area%	MS (+)
1.18	0.01	3.23	4.58	0.28	190
1.22	0.01	1143.55	1222.72	99.72	408

Integration Results for MSD1 TIC, MS File

RetTim	Width	Area	Height	Area%	MS (+)
1.25	0.03	1998000.13	925481.31	100.00	408

Ret. Time: 1.25

<<<< POSITIVE SPECTRA >>>>

ES-API Positive

