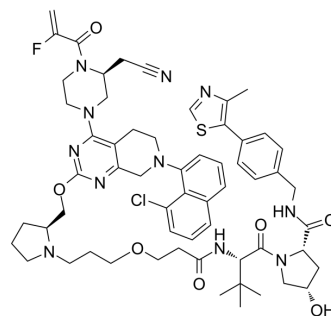


LC-2 epimer

Cat. No.:	HY-137516A
CAS No.:	2502156-12-7
Molecular Formula:	C ₅₉ H ₇₁ ClFN ₁₁ O ₇ S
Molecular Weight:	1132.78
Target:	PROTACs; Ras
Pathway:	PROTAC; GPCR/G Protein; MAPK/ERK Pathway
Storage:	Please store the product under the recommended conditions in the Certificate of Analysis.



BIOLOGICAL ACTIVITY

Description

LC-2 epimer is a differential isomer of LC-2. LC-2 is a mutation-selective PROTAC depressant for KRAS and contains a ligand for the von Hippel Lindau E3 ligase linked to the KRAS inhibitor MRTX849^[1].

REFERENCES

[1]. Bond MJ, et al. Targeted Degradation of Oncogenic KRASG12C by VHL-Recruiting PROTACs. ACS Cent Sci. 2020 Aug 26;6(8):1367-1375.

Caution: Product has not been fully validated for medical applications. For research use only.

Tel: 609-228-6898

Fax: 609-228-5909

E-mail: tech@MedChemExpress.com

Address: 1 Deer Park Dr, Suite Q, Monmouth Junction, NJ 08852, USA