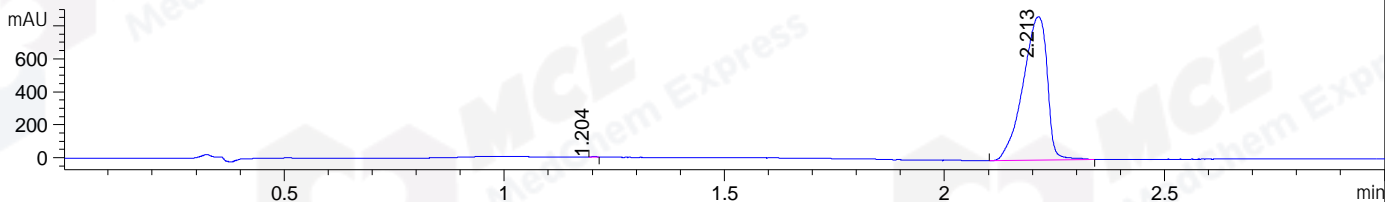
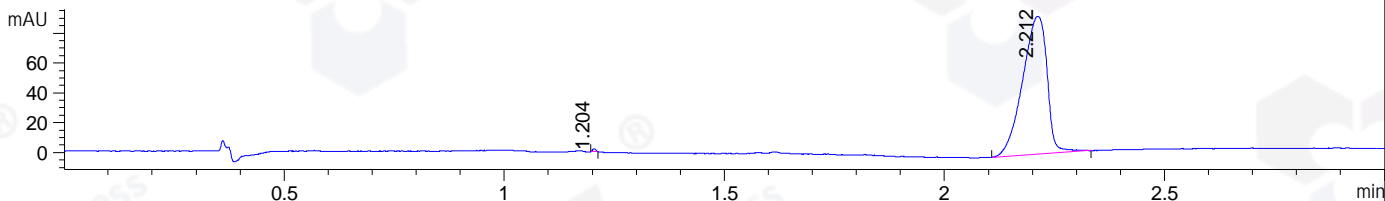


File ..DATA\2019\20190829\713\BIZ2019-828-CXL10.D Tgt Mass (CHM):
 Injection Date : 29 Aug 19 9:51 am +0800 Seq. Line : 15
 Sample Name : BIZ2019-828-CXL10 Location : P1-D-08
 Acq. Operator : ZJ_1432 Inj : 1
 Spec. Reported : MS Integration Inj Volume : 12 ul
 Acq. Method : D:\Chem32\1\data\2019\20190829\713\1-POS-3MIN.M
 Analysis Method : D:\CHEM32\1\DATA\2019\20190829\713\1-POS-3MIN.M
 Catalog No : HY-13756 Batch#44822
 Method Info : Mobile Phase: A: water(0.01%TFA) B:ACN(0.01%TFA)
 Gradient: 5% to 95%B within 1.3 min
 Flow Rate :1.8ml/min
 Column :SunFire C18, 4.6*50mm,3.5um A-RP-433
 Oven Temperature : 45□

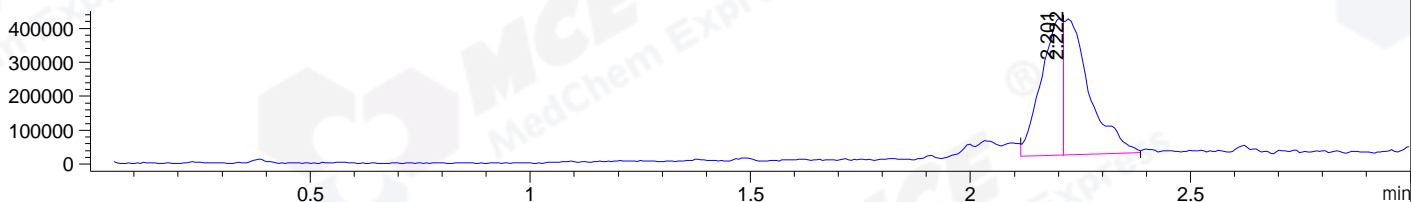
DAD1 B, Sig=214,4 Ref=off



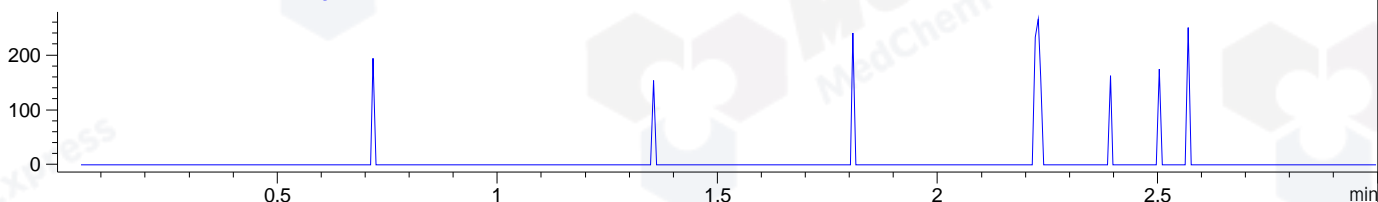
DAD1 C, Sig=254,4 Ref=off



MSD1 TIC, MS File ES-API, Pos, Scan, Frag: 70



Ion 804.48, MSD1 804.48, Target Mass 803.48 +H Positive, EIC=804.18:805.18



Integration Results for DAD1 B, Sig=214,4 Ref=off

RetTim	Width	Area	Height	Area%	MS (+)
1.20	0.01	2.37	3.64	0.07	ND
2.21	0.06	3332.01	871.21	99.93	826

Integration Results for DAD1 C, Sig=254,4 Ref=off

RetTim	Width	Area	Height	Area%	MS (+)
1.20	0.01	0.92	1.76	0.26	ND
2.21	0.06	356.51	92.35	99.74	826

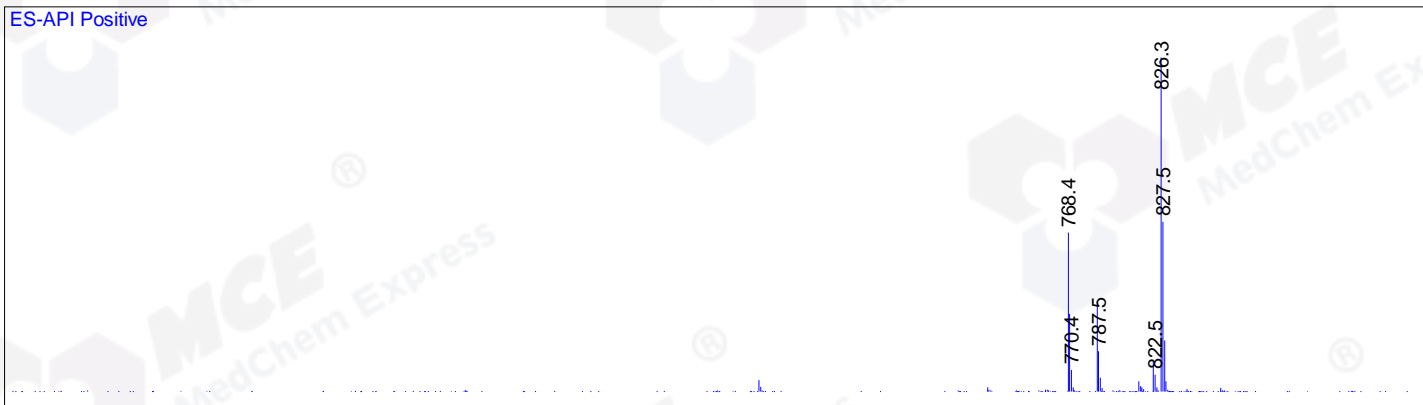
Integration Results for MSD1 TIC, MS File

RetTim	Width	Area	Height	Area%	MS (+)
2.20	0.05	1359671.25	403703.41	45.57	826
2.22	0.07	1623723.25	399870.25	54.43	826

Ret. Time: 2.20

<<<< POSITIVE SPECTRA >>>>

ES-API Positive



Ret. Time: 2.22

ES-API Positive

