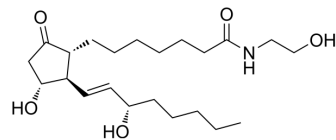


Prostaglandin E1 ethanolamide

Cat. No.:	HY-137567
CAS No.:	210976-81-1
Molecular Formula:	C ₂₂ H ₃₉ NO ₅
Molecular Weight:	397.55
Target:	Prostaglandin Receptor
Pathway:	GPCR/G Protein
Storage:	Please store the product under the recommended conditions in the Certificate of Analysis.



BIOLOGICAL ACTIVITY

Description

Prostaglandin E1 ethanolamide is an analog of prostaglandin E1 (PGE1) and may effectively inhibit GLI2-induced expression of target genes, including Gli1 and Ptch1, and tumor growth^[1].

REFERENCES

[1]. Use of gli2 inhibitor and method for screening compound inhibiting gli2. World Intellectual Property Organization, WO2020182077 A1 2020-09-17.

Caution: Product has not been fully validated for medical applications. For research use only.

Tel: 609-228-6898

Fax: 609-228-5909

E-mail: tech@MedChemExpress.com

Address: 1 Deer Park Dr, Suite Q, Monmouth Junction, NJ 08852, USA