

## Nicotinamide 1,N6-ethenoadenine dinucleotide

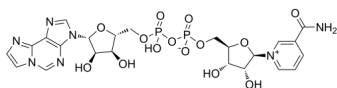
---

Cat. No.: HY-137592  
Batch No.: 288212  
CAS No.: 38806-38-1  
Molecular Formula: C<sub>23</sub>H<sub>27</sub>N<sub>7</sub>O<sub>14</sub>P<sub>2</sub>

### ANALYTICAL DATA

Theoretical: C(40.18%)、H(3.96%)、N(14.26%)  
Result: C(37.07%)、H(4.21%)、N(13.04%)

Chemical Structure:



**Caution: Product has not been fully validated for medical applications. For research use only.**

Tel: 609-228-6898

Fax: 609-228-5909

E-mail: [tech@MedChemExpress.com](mailto:tech@MedChemExpress.com)

Address: 1 Deer Park Dr, Suite Q, Monmouth Junction, NJ 08852, USA