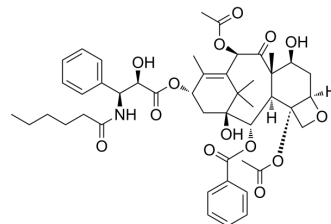


Paclitaxel C

Cat. No.:	HY-137776
CAS No.:	153415-45-3
Molecular Formula:	C ₄₆ H ₅₇ NO ₁₄
Molecular Weight:	847.94
Target:	Others
Pathway:	Others
Storage:	Please store the product under the recommended conditions in the Certificate of Analysis.



BIOLOGICAL ACTIVITY

Description

Paclitaxel C is a compound that can be found in taxus cutting^[1].

REFERENCES

[1]. Rene SCHEPENS, et al. Production of taxol from taxus cuttings. WO2022162101A1.

Caution: Product has not been fully validated for medical applications. For research use only.

Tel: 609-228-6898

Fax: 609-228-5909

E-mail: tech@MedChemExpress.com

Address: 1 Deer Park Dr, Suite Q, Monmouth Junction, NJ 08852, USA