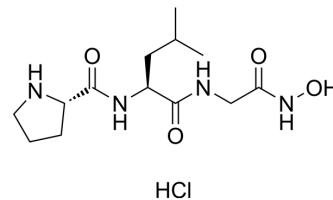


## Pro-Leu-Gly-NHOH hydrochloride

Cat. No.:	HY-137793
CAS No.:	120928-08-7
Molecular Formula:	C <sub>13</sub> H <sub>25</sub> ClN <sub>4</sub> O <sub>4</sub>
Molecular Weight:	336.82
Sequence:	Pro-Leu-Gly-NHOH
Sequence Shortening:	PLG-NHOH
Target:	MMP
Pathway:	Metabolic Enzyme/Protease
Storage:	Please store the product under the recommended conditions in the Certificate of Analysis.



### BIOLOGICAL ACTIVITY

Description	Pro-Leu-Gly-NHOH hydrochloride is an inhibitor of MMP-8 <sup>[1]</sup> .
-------------	--

### REFERENCES

[1]. Reinemer P, et al. Structural implications for the role of the N terminus in the 'superactivation' of collagenases. A crystallographic study. FEBS Lett. 1994;338(2):227-233.

**Caution: Product has not been fully validated for medical applications. For research use only.**

Tel: 609-228-6898

Fax: 609-228-5909

E-mail: tech@MedChemExpress.com

Address: 1 Deer Park Dr, Suite Q, Monmouth Junction, NJ 08852, USA