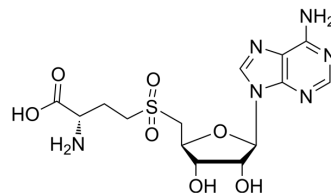


## SAHO2

|                    |   |
|--------------------|---|
| Cat. No.:          | HY-137802   |
| CAS No.:           | 53199-56-7  |
| Molecular Formula: | C <sub>14</sub> H <sub>20</sub> N <sub>6</sub> O <sub>7</sub> S                           |
| Molecular Weight:  | 416.41  |
| Target:            | Others  |
| Pathway:           | Others  |
| Storage:           | Please store the product under the recommended conditions in the Certificate of Analysis. |



## BIOLOGICAL ACTIVITY

### Description

SAHO2 is the sulfone form of the methyl donor S-(5'-adenosyl)-L-methionine chloride (SAM) and serves as a substrate for radical SAM enzymes<sup>[1]</sup>.

## REFERENCES

[1]. Mandalapu D, et al. Reductive cleavage of sulfoxide and sulfone by two radical S-adenosyl-L-methionine enzymes[J]. Biochemistry, 2018, 58(1): 36-39.

**Caution: Product has not been fully validated for medical applications. For research use only.**

Tel: 609-228-6898

Fax: 609-228-5909

E-mail: tech@MedChemExpress.com

Address: 1 Deer Park Dr, Suite Q, Monmouth Junction, NJ 08852, USA